

# Interface support

## SSA-ODU-TWO-M-MAxx12

Item 112257



GO TO PRODUCT

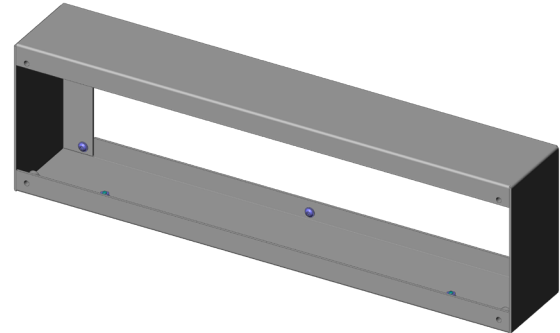
**ingun**<sup>®</sup>

Partner for Future Technology

- Interface support für ODU-MAC® Mass Interconnect interface
- Ideally designed for MA xx12 test fixtures
- Quick, easy installation on the back of the test fixture
- Reliable connection from test fixture to system interface

### Application

The interface frame (SSA) is used for reliable connection of the interface (SST) to the test fixture.



### General data

Product group:	Housing
Series:	SSA-MAxxxx
Type:	ODU-MAC Black-Line
Version:	12-Flex TWO M
Accessory type:	Additional function
Scope of delivery:	Unassembled
Width:	80 mm [3.14 in]
Height:	143 mm [5.62 in]
Weight:	0.75 kg [1.65 lbs]
Min. temperature:	10 °C [50 °F]
Max. temperature:	60 °C [140 °F]
RoHS-compliant:	Yes

### Compatible with

Manual test fixtures (MA):	MA xx12
Accessories:	SST-ODU-TWO-M

### Technical data

Length:	474 mm [18.6 in]
Outer dimensionS (WxDxH):	474 x 80 x 143 mm [18.6 x 3.14 x 5.62 in]

### INGUN Prüfmittelbau GmbH

Max-Stromeyer-Straße 162  
78467, Constance, Germany  
Phone +49 7531 8105-0  
Customer hotline +49 7531 8105-888  
Fax +49 7531 8105-65  
info@ingun.com



Prices and delivery times on request.  
Technical changes reserved. 05/26\_GB

Learn more about  
Test fixture kits

