

Interface support

SSA-PYLON-12-MAXx12

Item 114031



GO TO PRODUCT

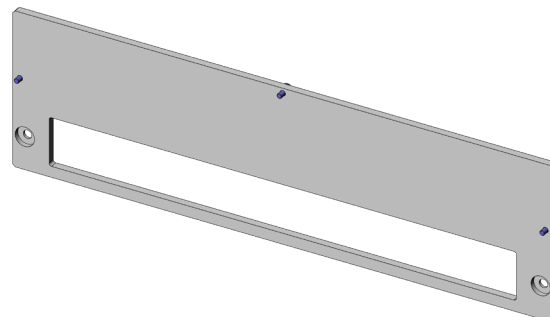
ingun[®]

Partner for Future Technology

- Interface support für INGUN Pylon interface
- Ideally designed for MA xx12 test fixtures
- Quick, easy installation on the back of the test fixture
- Reliable connection from test fixture to system interface

Application

The interface frame (SSA) is used for reliable connection of the interface (SST) to the test fixture.



General data

Product group:	Housing
Series:	SSA-MAXxxx
Type:	Pylon 12
Version:	MA xx12
Accessory type:	Additional function
Scope of delivery:	Unassembled
Width:	6 mm [.236 in]
Height:	128 mm [5.03 in]
Weight:	0.65 kg [1.43 lbs]
Min. temperature:	10 °C [50 °F]
Max. temperature:	60 °C [140 °F]
RoHS-compliant:	Yes

Compatible with

Manual test fixtures (MA):	MA xx12
Accessories:	SST-PYLON-12

Technical data

Length:	444 mm [17.4 in]
Outer dimensionS (WxDxH):	444 x 6 x 128 mm [17.4 x .236 x 5.03 in]

INGUN Prüfmittelbau GmbH

Max-Stromeyer-Straße 162
78467, Constance, Germany
Phone +49 7531 8105-0
Customer hotline +49 7531 8105-888
Fax +49 7531 8105-65
info@ingun.com



Prices and delivery times on request.
Technical changes reserved. 05/26_GB

Learn more about
Test fixture kits

