

Exchangeable kit ATS MA15/S-14/ESD

Item 116330-KIT



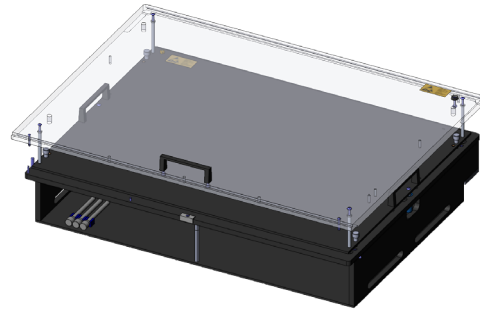
GO TO PRODUCT

ingun®

Partner for Future Technology

- ESD version
- Large useable arera 600 x 450 mm
- Quick, tool-free set-up, can be used without readjustment
- Modular, configurable internal interface for up to 14 interface blocks
- Installation space between probe plate and wiring protection plate increased to 100 mm
- Ventilation slits on the side panels
- Pressure plate unit and probe plate unit can be screwed together with stacking screws to form a unit with protected probe field
- Use of reinforcement bars recommended for configurations with more than 300 test probes or a force greater than 500 N

NEW



Application

The exchangeable kit is intended for use in the MA 2115 manual test fixture. It offers a usable area of 600 x 450 mm and is used for precise, reliable contacting of large PCBs with ESD requirements. Customised to the circuit board to be tested, the PC board is processed. The processing includes drilling holes in the probe plate, the moving plate, and the pressure plate, adding mechanisms for lateral contacting, if necessary, jigs for adjustment work on the PC board, equipped with spring-loaded test probes, push rods, and wiring.

Delivery

The fixture must be assembled upon delivery. This enables immediate DUT-specific machining.

Note:

For configurations with more than 300 test probes or a force greater than 500 N, the use of reinforcing bars is recommended.

Note:

The unpopulated internal interface is populated with SB-P interface blocks (DUT side). The maximum permissible interface force of 1,870 N must be observed.

Note:

The INFO 1317 customisation guidelines is used for professional installation.

Note:

Expansion with function units, e.g. locking units, safety switches, is possible in accordance with the INGUN technical handbook.

General data

Product group:	ATS manual test fixture (MA)
Subseries:	ATS MAxx
Series:	ATS MA15
Version:	ESD with interface
Scope of delivery:	Unassembled
For tandem fixtures:	No
Max. interface signals:	1700
Interface blocks required:	Device under test (DUT) side
Max. internal interface blocks:	14
Internal interface:	Available
Dual-stage contacting:	Yes, with compatible additional option
Double-sided contact:	Yes, with compatible additional option
Weight:	12.5 kg [27.5 lbs]
Min. temperature:	10 °C [50 °F]
Max. temperature:	60 °C [140 °F]
Low voltage:	No
RoHS-compliant:	Yes

Compatible with

Manual test fixtures (MA): MA 2115

Technical data

Pushrod length:	60 mm [2.36 in]
Test probe installation height, top:	16 mm [.629 in]
Test probe installation height, bottom:	10.5 mm [.413 in]
Test probe installation height, dual-stage, bottom:	16 mm [.629 in]
Free space above PCB:	58 mm [2.28 in]
Useable area (WxD):	600 x 450 mm [23.6 x 17.7 in]
Outer dimensionS (WxDxH):	681 x 523 x 232 mm [26.8 x 20.5 x 9.13 in]

EXCHANGEABLE KITS

Exchangeable kit ATS MA15/S-14/ESD

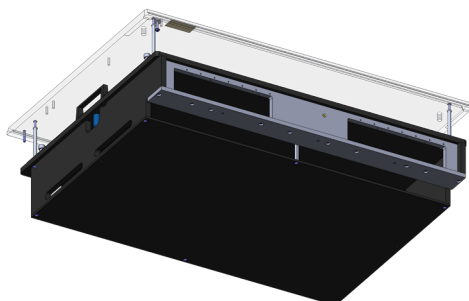
Item 116330-KIT



GO TO PRODUCT

ingun[®]

Partner for Future Technology



Basic unit & accessories

Part no.	Designation	Version
Basic unit		
116000	MA 2115/D/H/S-14	Manual test fixture
Accessories		
115006	FB-VSL-KIT-NDH-ATSMA15	Stiffener bar pressure frame unit
115008	FB-VSL-KIT-KTE-ATSMA15	Stiffener bar probe plate unit
45704-KIT	FB-ZSK-ESD-ATSMA/VA	Mounting kit top-contacting for ESD exchangeable kit
48266	FB-2SN-ATSMAXx	Dual-Stage retrofit kit
33482	FB-ESD-MAXx09/11/12/13/14	ESD customisation kit manual test fixture MA 21xx

INGUN Prüfmittelbau GmbH

Max-Stromeyer-Straße 162
78467, Constance, Germany
Phone +49 7531 8105-0
Customer hotline +49 7531 8105-888
Fax +49 7531 8105-65
info@ingun.com



Prices and delivery times on request.
Technical changes reserved. 06/26_GB

Learn more about
MA exchangeable kits



EXCHANGEABLE KITS

ingun.com