

Insertion Tool

BIT-GKS-913 M-B

Item BIT-GKS-913M-B



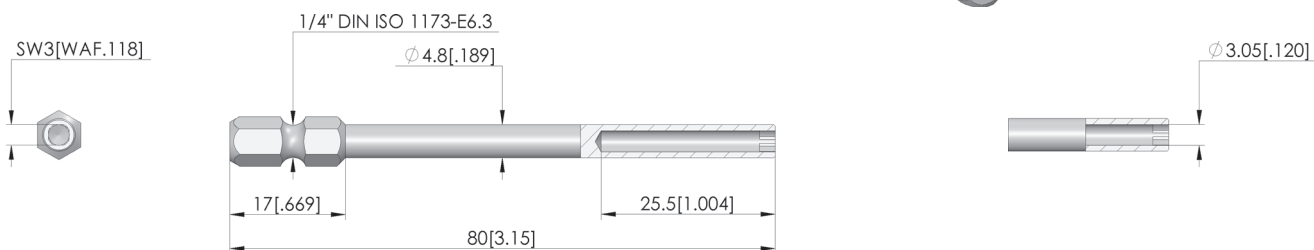
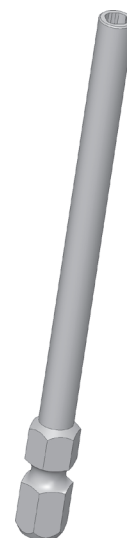
GO TO PRODUCT

ingun[®]

Partner for Future Technology

BIT-Werkzeug

Zum Ein- und Ausschrauben von Kontaktstiften



General data

| | |
|---|---------------------------------|
| Screw-in torque max.: | 10 cNm [.885 lbf·in] |
| Product group: | Bit inserts (BIT) |
| Compatible test probe(s) / receptacle(s): | 021 GKS-913 |
| Series: | BIT-GKS |
| Tool for receptacle (KS): | No |
| Tool for test probe (GKS): | Yes |
| Test probe installation type: | Screw-in |
| Min. tip diameter: | 0 mm [0 in] |
| Max. tip diameter: | 3 mm [.118 in] |
| Tool version: | Rigid |
| Screw-in torque: | 5 – 10 cNm [.442 – .885 lbf·in] |
| RoHS-compliant: | Yes |

INGUN Prüfmittelbau GmbH

Max-Stromeyer-Straße 162
78467, Constance, Germany
Phone +49 7531 8105-0
Customer hotline +49 7531 8105-888
Fax +49 7531 8105-65
info@ingun.com



Prices and delivery times on request.
Technical changes reserved. 06/26_GB

Learn more about
Tool



ingun.com