

Push rod NHS-ST-60,0-2,5-POM-AL

Item 21615



GO TO PRODUCT

ingun[®]

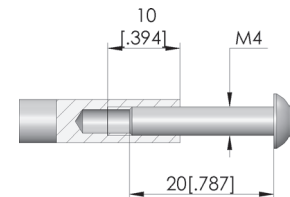
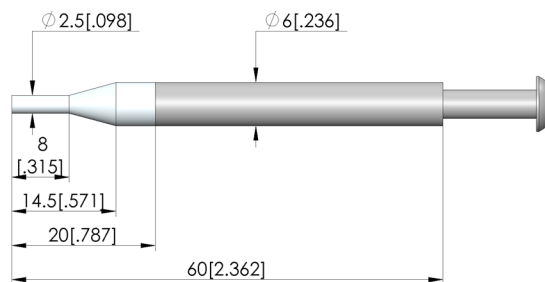
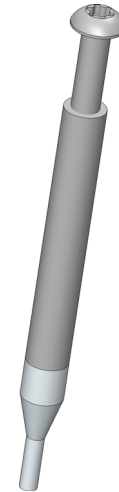
Partner for Future Technology

- Trusted push rods for reliable, rigid fixing of the PCB in the probe field against the force of the test probes
- Robust, pressure-resistant design
- Quick, easy installation

Application

Push rods (NHS) are used in customisations to securely hold electronic circuit boards in place against the force of the test probes during contacting in the test fixture. Push rods are mounted in the pressure frame plate.

INGUN SELECTION



General data

Product group:	Push rods (NHS)
Series:	NHS-ST
Type:	Rigid
Version:	Not ESD compliant
Accessory type:	Customising accessories
Outer dimensions (TxL):	6 x 60 mm [2.36 x 2.36 in]
Colour:	Untreated
RoHS-compliant:	Yes

Mechanical data

Total length:	60 mm [2.36 in]
---------------	-----------------

Compatible with

Exchangeable kits version:	ESD
Manual test fixtures (MA):	MA 20xx
MA exchangeable kits (ATS MA):	ATS MAxx

Technical data

Tip diameter:	2.5 mm [.098 in]
Pushrod shaft diameter:	6 mm [.236 in]
Tip material:	POM
Shaft material:	AL
True running:	2768 mK
Installation:	Screwed in
Thread:	M4x10 mm
Tip length:	20 mm [.787 in]

INGUN Prüfmittelbau GmbH

Max-Stromeyer-Straße 162
78467, Constance, Germany
Phone +49 7531 8105-0
Customer hotline +49 7531 8105-888
Fax +49 7531 8105-65
info@ingun.com



Prices and delivery times on request.
Technical changes reserved. 06/26_GB