

Insertion Tool

BIT-GKS-899 M-B

Item BIT-GKS-899M-B



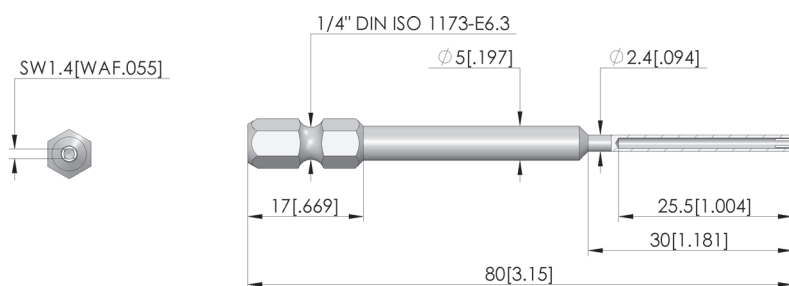
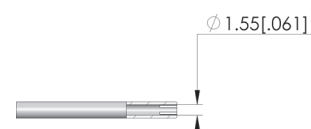
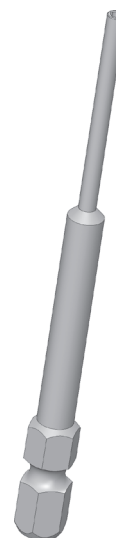
GO TO PRODUCT

ingun[®]

Partner for Future Technology

BIT-Werkzeug

Zum Ein- und Ausschrauben von Kontaktstiften



General data

Screw-in torque max.:	3 cNm [.265 lbf·in]
Product group:	Bit inserts (BIT)
Compatible test probe(s) / receptacle(s):	019 GKS-899
Series:	BIT-GKS
Tool for receptacle (KS):	No
Tool for test probe (GKS):	Yes
Test probe installation type:	Screw-in
Min. tip diameter:	0 mm [0 in]
Max. tip diameter:	1.5 mm [.059 in]
Tool version:	Rigid
Screw-in torque:	2 – 3 cNm [.177 – .265 lbf·in]
RoHS-compliant:	Yes

INGUN Prüfmittelbau GmbH

Max-Stromeyer-Straße 162
78467, Constance, Germany
Phone +49 7531 8105-0
Customer hotline +49 7531 8105-888
Fax +49 7531 8105-65
info@ingun.com



Prices and delivery times on request.
Technical changes reserved. 06/26_GB

Learn more about
Tool



ingun.com