

Test plug PS-PowerDC-D2,1

Item 35640

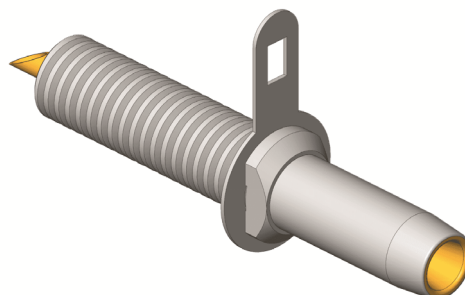


GO TO PRODUCT

ingun[®]

Partner for Future Technology

- Signal transmission via solder connection
- Outstanding service life, highly resistant to wear



General data

| | |
|------------------------|-------------------------------|
| Product group: | PS test plug |
| Series: | PS |
| Sub-series: | PS-DC |
| DUT / contact: | PowerDC-D2,1 |
| DUT interface gender : | M signal conductor male / pin |
| Width: | 18 mm [.708 in] |
| Height: | 10 mm [.393 in] |
| Min. temperature: | -40 °C [-40 °F] |
| Max. temperature: | 80 °C [176 °F] |
| RoHS-compliant: | Yes |

Outer conductor data

Outer conductor max. current load capacity: 1 A

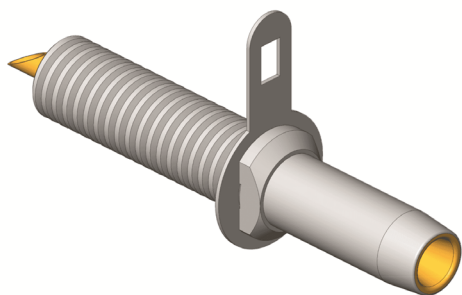
Inner conductor data

Inner conductor max. current load capacity: 1 A

Number of inner conductor poles: 2

Mechanical data

Total length: 41 mm [1.61 in]



INGUN Prüfmittelbau GmbH

Max-Stromeyer-Straße 162
78467, Constance, Germany
Phone +49 7531 8105-0
Customer hotline +49 7531 8105-888
Fax +49 7531 8105-65
info@ingun.com



Prices and delivery times on request.
Technical changes reserved. 05/26_GB

Learn more about
Test probes

