



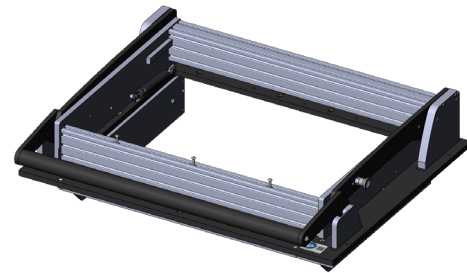
GO TO PRODUCT

INGUN SELECTION

- Parallel closing drive unit with mounting plate, with internal interface
- High contact force
- Modularly configurable signal transmission with internal interfaces
- Quick, easy, precise installation
- Energy-saving, shock-absorbing opening mechanism
- Can be used for various applications

Application

The drive unit serves as the opening, closing and contacting mechanism. It is used to perform the parallel contact stroke to ensure precise and reliable contacting. It is operated manually. It can be used to suit specific configurations and can be mounted quickly and easily on housings of the appropriate size.



General data

| | |
|----------------------------------|---------------------|
| Product group: | Manual drive unit |
| Main series: | ATE MAxxxx |
| Subseries: | ATE MA2xxx |
| Series: | ATE MA20xx |
| Size: | 2013 |
| Test fixture type: | With mounting plate |
| Contact stroke generation: | Manual |
| Max. interface signals: | 1700 |
| Interface blocks required: | No |
| Max. contact force: | 2000 N [7,193 ozf] |
| Approx. parallel contact stroke: | 15 mm [.59 in] |
| Min. temperature: | 10 °C [50 °F] |
| Max. temperature: | 60 °C [140 °F] |
| RoHS-compliant: | Yes |

Technical data

| | |
|-----------------------------------|--|
| Force of gas pressure springs: | 400 N (L: 200 N / R: 200 N) |
| Pressure frame opening angle: | 69 ° |
| Outer dimensions, open (WxDxH): | 616 x 508 x 588 mm [24.2 x 20 x 23.1 in] |
| Outer dimensions, closed (WxDxH): | 616 x 555 x 190 mm [24.2 x 21.8 x 7.48 in] |

Drive unit / overclamp

ATE MA2013

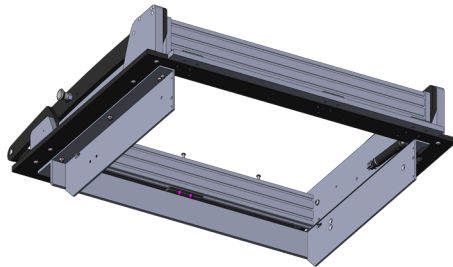
Item 48370



GO TO PRODUCT

ingun[®]

Partner for Future Technology



INGUN Prüfmittelbau GmbH

Max-Stromeyer-Straße 162
78467, Constance, Germany
Phone +49 7531 8105-0
Customer hotline +49 7531 8105-888
Fax +49 7531 8105-65
info@ingun.com



Prices and delivery times on request.
Technical changes reserved. 05/26_GB

Learn more about
Test fixture kits

