

Test Probe VF4-203 400 A 25

Item VF4-0094



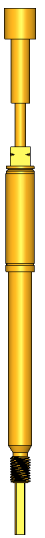
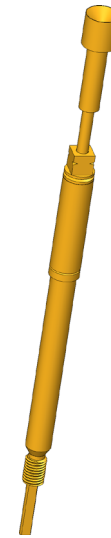
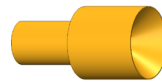
GO TO PRODUCT

ingun[®]

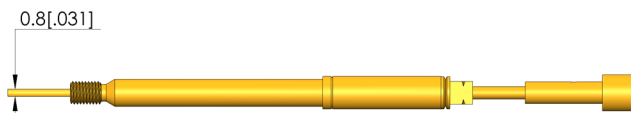
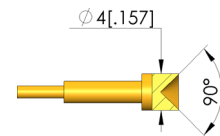
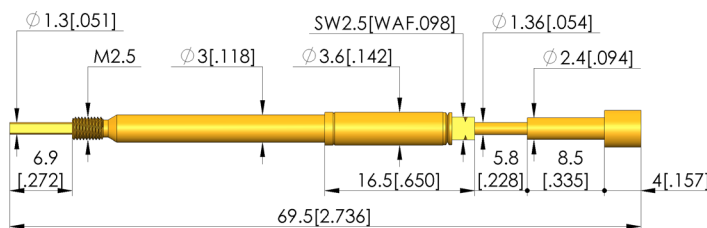
Partner for Future Technology

Verrastprüfung

Zur Überprüfung der korrekten Verrastung des Kontaktterminals im Steckergehäuse



1:1



General data

Screw-in torque max.:	5 cNm [.442 lbf-in]
Product group:	Push-back probes
Sub-product group:	Push-back probes
Series:	VF4
Grid:	4.5 mm [177 mil]
Contacting from:	Post
Magnetic:	Yes
Installation type:	Screw-in
Quick-exchange system:	Yes
Adjustable installation height:	No
Non-rotating:	Yes
Continuous plunger:	$\phi 1,3 \times 0,8 \times 6,9$
Screw-in torque:	3 – 5 cNm [.265 – .442 lbf-in]
Compatible receptacle(s):	KS-VF4
Min. temperature:	-40 °C [-40 °F]
Max. temperature:	80 °C [176 °F]
RoHS-compliant:	Yes

Tip style data

Tip style:	03 inverse cone
Tip diameter:	4 mm [.157 in]
Tip style surface:	A gold
Tip style material:	2 steel

Electrical data

Current load capacity / rated current:	8 A
Typical resistance (Ri):	30 mOhm

Mechanical data

Total length:	69.5 mm [2.73 in]
Barrel diameter:	3 mm [.118 in]
Maximum stroke:	5.5 mm [.216 in]
Spring pre-load:	7 N [25.1 ozf]
Spring force at working stroke:	25 N [89.9 ozf]
Recommended working stroke:	5 mm [.196 in]

SCREW-IN TEST PROBE

Test Probe

VF4-203 400 A 25

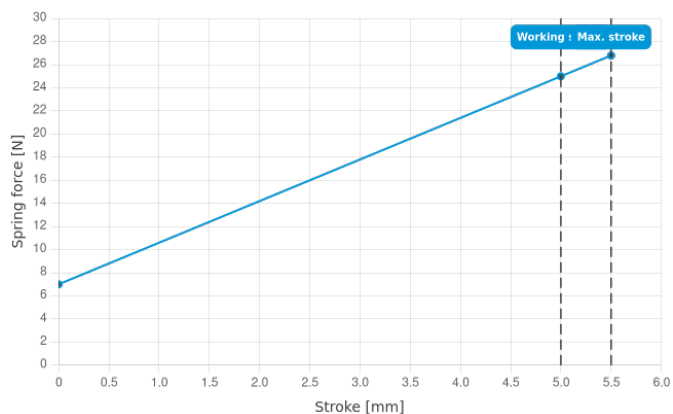
Item VF4-0094



GO TO PRODUCT

ingun®

Partner for Future Technology



INGUN Prüfmittelbau GmbH

Max-Stromeyer-Straße 162
78467, Constance, Germany
Phone +49 7531 8105-0
Customer hotline +49 7531 8105-888
Fax +49 7531 8105-65
info@ingun.com



Prices and delivery times on request.
Technical changes reserved. 06/26_GB

Learn more about
Screw-in test probe



SCREW-IN TEST PROBE

ingun.com