

Rear panel unit

RWE VA4060

Item 113680



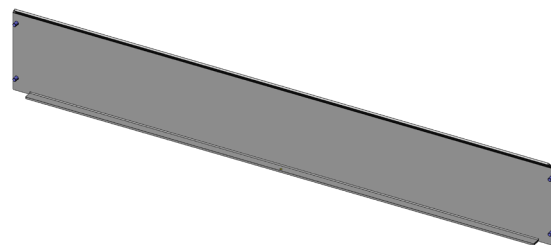
GO TO PRODUCT

ingun[®]

Partner for Future Technology

Application

Rear panel including installation accessories for vacuum test fixtures VA 40xx for modular test fixture configuration.



General data

Product group:	Housing
Series:	RWE-VAxxxx
Type:	VA 4060
Accessory type:	Additional function
Scope of delivery:	Unassembled
Material:	3.3535
Width:	645 mm [25.3 in]
Height:	100 mm [3.93 in]
Weight:	0.4 kg [.881 lbs]
Min. temperature:	10 °C [50 °F]
Max. temperature:	60 °C [140 °F]
RoHS-compliant:	Yes

Compatible with

Vacuum test fixtures (VA): VA 4060

Technical data

Length: 12 mm [.472 in]
Outer dimensionS (WxDxH): 645 x 12 x 100 mm [25.3 x .472 x 3.93 in]

INGUN Prüfmittelbau GmbH

Max-Stromeyer-Straße 162
78467, Constance, Germany
Phone +49 7531 8105-0
Customer hotline +49 7531 8105-888
Fax +49 7531 8105-65
info@ingun.com



Prices and delivery times on request.
Technical changes reserved. 05/26_GB

Learn more about
Test fixture kits

