

# Interface support

## SSA-GR228x-15-VA4040

Item 113483



GO TO PRODUCT

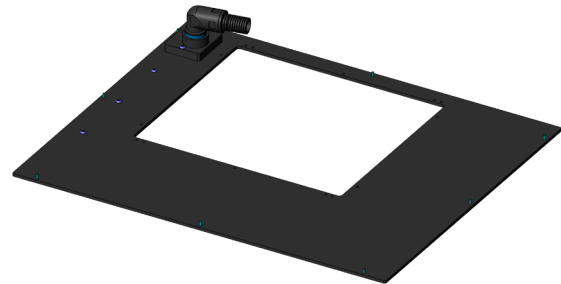
**ingun**<sup>®</sup>

Partner for Future Technology

- Interface support für TERADYNE GR228x-15/xx (LH, 12X) interface
- Ideally designed for VA 4040 test fixtures
- Quick, easy installation on the bottom of the test fixture
- Reliable connection from test fixture to system interface

### Application

The interface frame (SSA) is used for reliable connection of the interface (SST) to the test fixture.



### General data

Product group:	Housing
Series:	SSA-VAxxxx
Type:	GR228x-15 (Teradyne)
Version:	VA 4040
Accessory type:	Additional function
Scope of delivery:	Unassembled
Width:	448 mm [17.6 in]
Height:	96.5 mm [3.79 in]
Weight:	1.1 kg [2.42 lbs]
Min. temperature:	10 °C [50 °F]
Max. temperature:	60 °C [140 °F]
RoHS-compliant:	Yes

### Compatible with

Vacuum test fixtures (VA):	VA 4040
Accessories:	SST-GR228x-15/07

### Technical data

Length:	546 mm [21.4 in]
Outer dimensionS (WxDxH):	546 x 448 x 96.5 mm [21.4 x 17.6 x 3.79 in]

### INGUN Prüfmittelbau GmbH

Max-Stromeyer-Straße 162  
78467, Constance, Germany  
Phone +49 7531 8105-0  
Customer hotline +49 7531 8105-888  
Fax +49 7531 8105-65  
info@ingun.com



Prices and delivery times on request.  
Technical changes reserved. 05/26\_GB

Learn more about  
Test fixture kits

