

Back panel FB-RWA-MA160

Item 51320

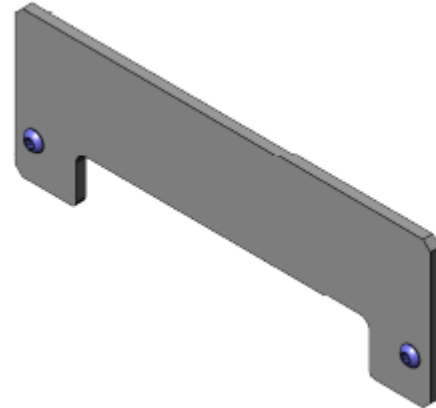


GO TO PRODUCT

ingun[®]

Partner for Future Technology

- Upgrade kits to make operation easier, increase the testing reliability, and to reduce handling times
- Available for manual test fixtures and exchangeable kits
- Wide range of varying functions



General data

Product group:

Series:

Type:

Version:

Accessory type:

Scope of delivery:

Material:

Width:

Height:

RoHS-compliant:

Functional units

FB-MAxxx

Opening 120 x 20 mm

Rear panel

Additional function

Unassembled

Adaptonit 105-AS

60 mm [2.36 in]

4 mm [.157 in]

Yes

Compatible with

Exchangeable kits version:

Manual test fixtures (MA):

No limitations

MA 160

Technical data

Installation:

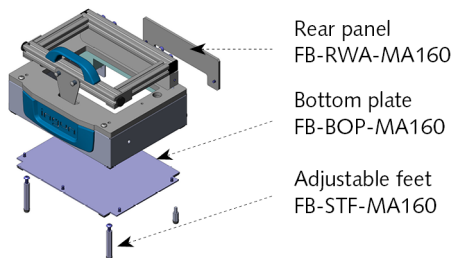
Length:

Outer dimensionS (WxDxH):

Screw, M4

170 mm [6.69 in]

60 x 170 x 4 mm [2.36 x 6.69 x .157 in]



INGUN Prüfmittelbau GmbH

Max-Stromeyer-Straße 162

78467, Constance, Germany

Phone +49 7531 8105-0

Customer hotline +49 7531 8105-888

Fax +49 7531 8105-65

info@ingun.com



Prices and delivery times on request.
Technical changes reserved. 05/26_GB

Learn more about
MA functional units



FUNCTIONAL UNIT

ingun.com