

S-Line assembly kit, bottom

SBU-145-230-WL-ATMA11

Item 113313



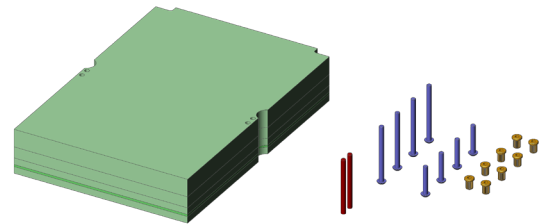
GO TO PRODUCT

ingun[®]

Partner for Future Technology

- Precise, reliable contacting in small grids
- Quick, easy installation
- Extensive, detailed customisation guidelines
- Plate material is deflection-resistant FR4

NEW



General data

Product group:
Subseries:
Series:
Version:
Scope of delivery:
Dual-stage contacting:
Weight:
Min. temperature:
Max. temperature:
RoHS-compliant:

ATS MA upgrade kits
ATS MAxx
SBU
S-Line wireless
Unassembled
Yes
2.81 kg [6.19 lbs]
10 °C [50 °F]
60 °C [140 °F]
Yes

Compatible with

Exchangeable kit(s) (ATS):
Manual test fixtures (MA):

ATS MA11
MA 2011

Technical data

Useable area (WxD):
Outer dimensionS (WxDxH):

145 x 230 mm [5.7 x 9.05 in]

158 x 230 x 40 mm [6.22 x 9.05 x 1.57 in]

INGUN Prüfmittelbau GmbH

Max-Stromeyer-Straße 162
78467, Constance, Germany
Phone +49 7531 8105-0
Customer hotline +49 7531 8105-888
Fax +49 7531 8105-65
info@ingun.com



Prices and delivery times on request.
Technical changes reserved. 06/26_GB

Learn more about
MA exchangeable kits



ingun.com