

Manual test fixture

MA 2113T/D/H/2xS-5

Item 32300



GO TO PRODUCT

ingun[®]

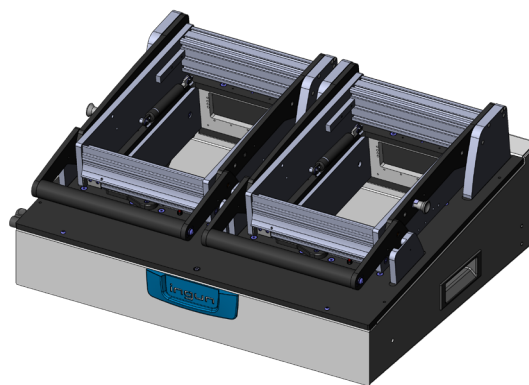
Partner for Future Technology

INGUN SELECTION

- Manual test fixtures with parallel closing drive mechanism for testing medium PCB quantities with the highest quality and precision
- Interchangeable test fixtures with and without pre-configured test system interface
- Standard, ESD, and RF exchangeable kits that can be installed without tools and used without readjustment
- Modularly configurable signal transmission using interface blocks, which can be quickly detached
- Detailed accompanying documents (e.g., customising guidelines)
- Maximum opening angle may vary due to the length tolerance of +/- 2 mm of the gas spring

Note:

By replacing the gas springs, an additional weight of 3 kg can be loaded onto the pressure frame for every 100 N increase.



General data

Test system interface:	Not pre-wired
Product group:	Manual test fixtures (MA)
Main series:	MA xxxx
Subseries:	MA 21xx
Series:	MA 2113T
Size:	xx13T
Test fixture type:	Tandem exchangeable test fixture
Contact stroke generation:	Manual
Housing type:	Desk housing
Max. interface signals:	1700
Interface blocks required:	Test system side
Max. internal interface blocks:	2 x 5
Contacting direction:	Single-sided (bottom)
Max. contact force:	2000 N [7,193 ozf]
Approx. parallel contact stroke:	15 mm [.59 in]
Weight:	15.4 kg [33.9 lbs]
Min. temperature:	10 °C [50 °F]
Max. temperature:	60 °C [140 °F]
Low voltage:	Yes, with suitable additional option
ESD-compliant:	Yes, with compatible exchangeable kit
RoHS-compliant:	No

Technical data

Test probe installation height, top:	16 mm [.629 in]
Test probe installation height, bottom:	10.5 mm [.413 in]
Test probe installation height, dual-stage, bottom:	16 mm [.629 in]
Free space above PCB:	58 mm [2.28 in]
Force of gas pressure springs:	200 N (L: 100 N / R: 100 N)
Pressure frame opening angle:	69 °
Standard version:	Yes, with compatible exchangeable kit
Useable area, standard (WxD):	each 150 x 240
ESD version:	Yes, with compatible exchangeable kit
Useable area, ESD (WxD):	each 150 x 240
Radio frequency version:	Yes, with compatible exchangeable kit
Useable area, radio frequency (WxD):	each 100 x 160
Rigid pin version:	No
Dual-stage version:	Yes, with compatible additional option
Useable area, dual-stage (WxD):	each 150 x 240
Additional contacting unit (ZSK), top:	Yes, with suitable additional option
Outer dimensions, open (WxDxH):	648 x 533 x 591 mm [25.5 x 20.9 x 23.2 in]
Outer dimensions, closed (WxDxH):	648 x 533 x 270 mm [25.5 x 20.9 x 10.6 in]

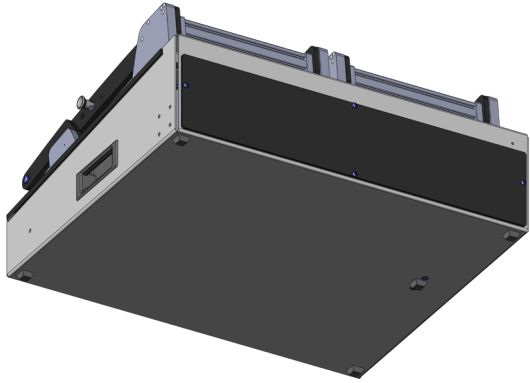
Manual test fixture MA 2113T/D/H/2xS-5

Item 32300



ingun[®]

Partner for Future Technology



INGUN Prüfmittelbau GmbH

Max-Stromeyer-Straße 162
78467, Constance, Germany
Phone +49 7531 8105-0
Customer hotline +49 7531 8105-888
Fax +49 7531 8105-65
info@ingun.com



Prices and delivery times on request.
Technical changes reserved. 05/26_GB

Learn more about
Manual test fixtures (MA)



ingun.com

MANUAL TEST FIXTURE