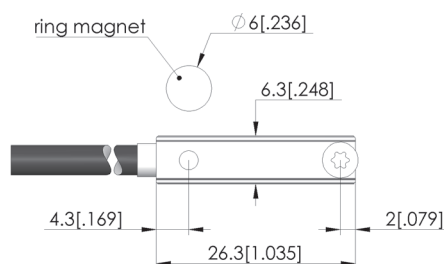
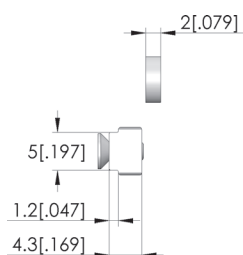
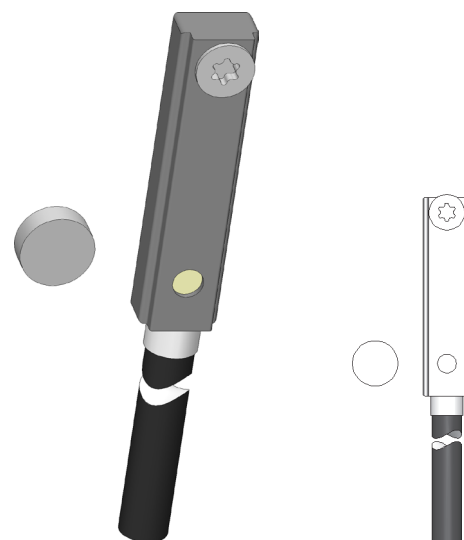




- Berührungslos wirkend
- Präziser Schalterpunkt
- Robust gegen Staub, Feuchtigkeit und Erschütterungen
- Schaltabstand: 3 mm

Application

Näherungsschalter werden zur Erkennung von Positionen eingesetzt, um Prozesse zu steuern oder Zustände zu überwachen. Sie wirken berührungslos.



1:1

General data

Product group:	Electric accessory
Series:	ENS
Type:	Proximity switch set, magnetic
Version:	Closer
Accessory type:	Customising accessories
Scope of delivery:	Incl. magnet and screw
Width:	6.3 mm [.248 in]
Height:	4.3 mm [.169 in]
Weight:	0.5 kg [1.1 lbs]
Min. temperature:	10 °C [50 °F]
Max. temperature:	60 °C [140 °F]
RoHS-compliant:	Yes

Compatible with

Accessories: SAM-M-20-150N-070-063

Technical data

Connection:	Cable
Max. current:	0.5 A
Installation:	Clamped in T-slot
Max. voltage:	30 VDC
Length:	26.3 mm [1.03 in]
Cable length:	2500 mm [98.4 in]
Outer dimensionS (WxDxH):	6.3 x 26.3 x 4.3 mm [.248 x 1.03 x .169 in]

Detection - limit position

FB-ABF-E-M-SAM-M

Item 45790



GO TO PRODUCT

ingun[®]

Partner for Future Technology



INGUN Prüfmittelbau GmbH

Max-Stromeyer-Straße 162
78467, Constance, Germany
Phone +49 7531 8105-0
Customer hotline +49 7531 8105-888
Fax +49 7531 8105-65
info@ingun.com



Prices and delivery times on request.
Technical changes reserved. 06/26_GB