

Cleaning mat

KRM-460-690-09

Item 56950



GO TO PRODUCT

ingun®

Partner for Future Technology

- Bewährte Kontaktreinigungsmatte zur Reinigung verschmutzter Kontaktstiftköpfe
- Easy way to extend the service life of test probes
- Ideal for pointed, aggressive plunger tips with self-cleaning properties

Application

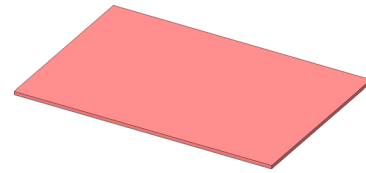
Kontaktreinigungsmatten (KRM) werden bei der Reinigung verschmutzter Kontaktstiftköpfe eingesetzt. Eine auf Prüflingsgröße zugeschnittene Kontaktreinigungsmatte wird anstelle des Prüflings in den Prüfadapter gelegt. Bei der Kontaktierung werden die Köpfe der Kontaktstifte in die Reinigungsmatte gedrückt. Die spezielle Zusammensetzung der Kontaktreinigungsmatte führt zu einer Reinigung der Kontaktstiftköpfe.

Usable area

This type of cleaning is particularly recommended for pointed, aggressive tip styles with self-cleaning properties, such as tip styles 01, 09, 15, 31, 77, 91, 97, and 98. Residues are dislodged from these tip styles more effectively than from other tip style geometries.

Special features

- Durability under laboratory conditions approx. 1000 punctures on one spot
- Typical groove depth is approximately 2.0 mm but depends on the spring force

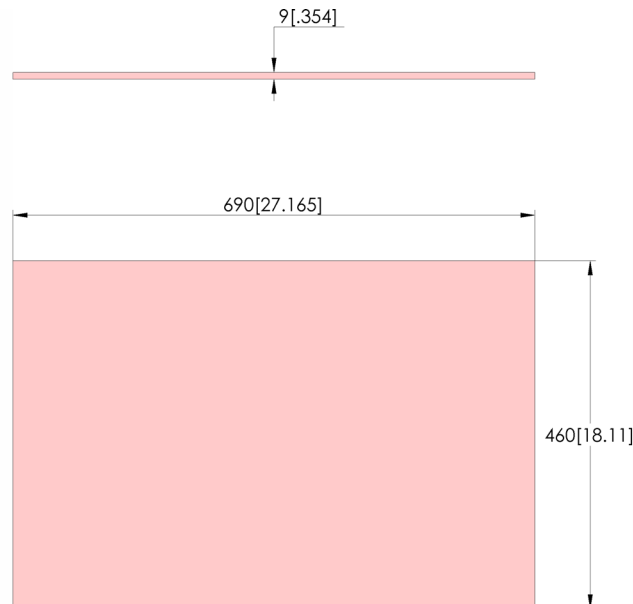


Note:

Die Kontaktreinigungsmatte enthält neben Silikon auch Anteile von Silizium, Aluminium und Titan als Verbindung SiO₂, Al₂O₃ und TiO₂.

Note:

The cleaning effect and mechanical durability of the cleaning mat was tested in the INGUN laboratory using fully-automatic, computer-controlled endurance test stations. As the service life depends on several different factors, and in particular on the specific test application, INGUN does not guarantee the actual service life in the test field.



General data

Product group:	Cleaning mat
Series:	KRM
Type:	9.0 mm mat
Version:	ESD charging possible
Accessory type:	Cleaning accessories
Material:	Silicone/quartz powder blend
Width:	690 mm [27.1 in]
Height:	9 mm [.354 in]
Weight:	2.9 kg [6.39 lbs]
Min. temperature:	-45 °C [-49 °F]
Max. temperature:	180 °C [356 °F]
RoHS-compliant:	Yes

Compatible with

Exchangeable kits version: No limitations

Technical data

Useable area (WxD):	460 x 690 mm [18.1 x 27.1 in]
Length:	460 mm [18.1 in]
Outer dimensionS (WxDxH):	690 x 460 x 9 +/- 3 mm

Cleaning mat

KRM-460-690-09

Item 56950

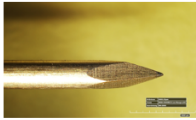


ingun[®]

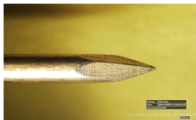
Partner for Future Technology



Test probe tip after
0 penetration cycles



Test probe tip after
5 penetration cycles



Test probe tip after
10 penetration cycles

INGUN Prüfmittelbau GmbH

Max-Stromeyer-Straße 162
78467, Constance, Germany
Phone +49 7531 8105-0
Customer hotline +49 7531 8105-888
Fax +49 7531 8105-65
info@ingun.com



Prices and delivery times on request.
Technical changes reserved. 06/26_GB