

# Battery contacting probe

## BCP-120 306 230 A 3002

Item BCP-120-0002

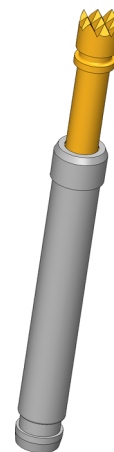


GO TO PRODUCT

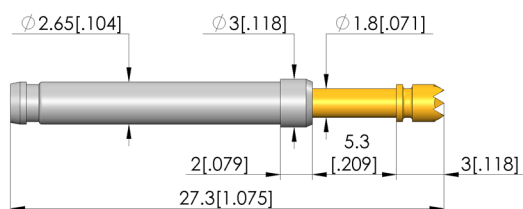
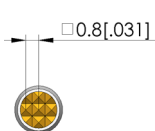
**ingun**<sup>®</sup>

Partner for Future Technology

- Contacting solution for prismatic and cylindrical cells such as 18600, 21700 and 46xx as well as coin cells
- Current rating upto 12A on Al DUT with temperature rise  $dT \leq 20$  K ; max. current rating of 30A on high conducting materials like copper alloys
- Designed for a range of cell contacting applications such as formation, AC-IR, open circuit voltage (OCV) measurement and end-of-life (EOL) testing
- Low-resistance contact probe with  $R_i$  typical  $< 10$  m $\Omega$



1:1



### General data

Product group:	Battery Contacting
Sub-product group:	Standard BCP (press-in)
Series:	BCP-120
Application rec.:	
Grid:	4 mm [157 mil]
DUT / contact:	
Magnetic:	Yes
Installation type:	Plug-in
Quick-exchange system:	Yes
Adjustable installation height:	No
Non-rotating:	No
Compatible receptacle(s):	KS-113
Min. temperature:	-100 °C [-148 °F]
Max. temperature:	200 °C [392 °F]
RoHS-compliant:	Yes

### Electrical data

Current load capacity / rated current:	30 A
Rated current on copper @ $\Delta T \leq 20$ K:	20 A
Rated current on copper @ $\Delta T \leq 60$ K:	30 A
Rated current on aluminium @ $\Delta T \leq 20$ K:	12 A
Rated current on aluminium @ $\Delta T \leq 60$ K:	20 A
Typical resistance ( $R_i$ ):	10 mOhm

### Mechanical data

Total length:	27.3 mm [1.07 in]
Barrel diameter:	2.65 mm [.104 in]
Maximum stroke:	5.3 mm [.208 in]
Spring pre-load:	0.71 N [2.55 ozf]
Collar height:	02
Spring force at working stroke:	3 N [10.7 ozf]
Recommended working stroke:	4 mm [.157 in]

### Tip style data

Tip style:	06 serrated
Tip diameter:	2.3 mm [.09 in]
Tip style surface:	A gold
Tip style material:	3 CuBe

# Battery contacting probe

## BCP-120 306 230 A 3002

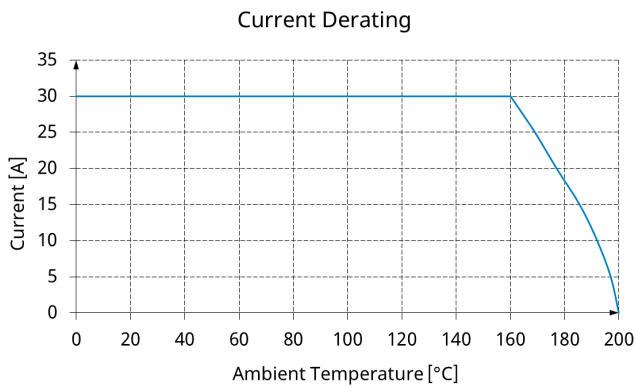
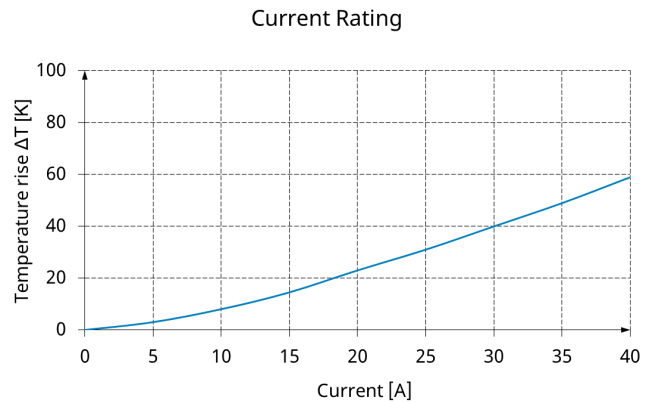
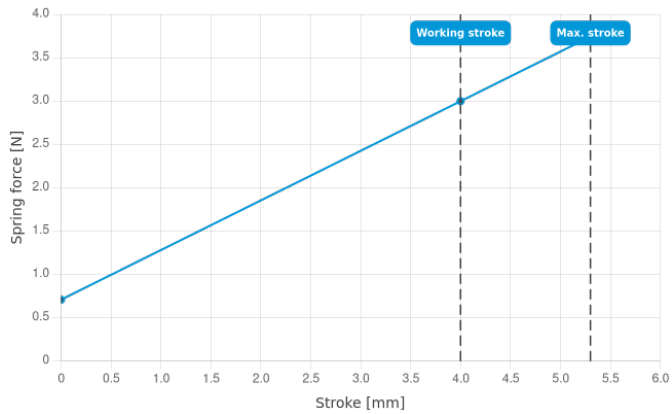
Item BCP-120-0002



GO TO PRODUCT

# ingun®

Partner for Future Technology



### INGUN Prüfmittelbau GmbH

Max-Stromeyer-Straße 162  
78467, Constance, Germany  
Phone +49 7531 8105-0  
Customer hotline +49 7531 8105-888  
Fax +49 7531 8105-65  
info@ingun.com



Prices and delivery times on request.  
Technical changes reserved. 06/26\_GB

Learn more about  
Test probes

