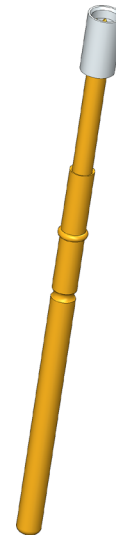
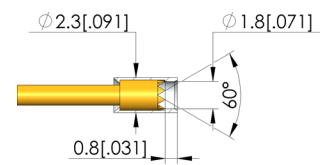
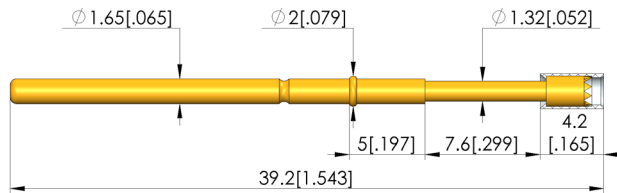
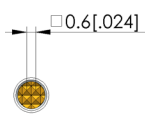




- Robust test probes with distinctive collar (stop) on the barrel
- Optimum adjustment of the stroke ratios in the test fixture: The collar is available in different heights, which, in combination with the receptacles, allows a range of installation heights
- Version with central beading ensure low wobble for contacting small test points
- Stainless steel versions for temperatures from -100 °C up to +200 °C available



1:1



General data

Product group: ICT / FCT (in-circuit test and function test)
 Sub-product group: Metric standard
 Series: GKS-422
 Grid: 2.54 mm [100 mil]
 Contacting from: Post
 Magnetic: Yes
 Installation type: Plug-in
 Quick-exchange system: Yes
 Adjustable installation height: No
 Non-rotating: No
 Compatible receptacle(s): KS-112
 Min. temperature: -40 °C [-40 °F]
 Max. temperature: 80 °C [176 °F]
 RoHS-compliant: Yes

Product group: ICT / FCT (in-circuit test and function test)
 Sub-product group: Metric standard
 Series: GKS-422
 Grid: 2.54 mm [100 mil]
 Contacting from: Post
 Magnetic: Yes
 Installation type: Plug-in
 Quick-exchange system: Yes
 Adjustable installation height: No
 Non-rotating: No
 Compatible receptacle(s): KS-112
 Min. temperature: -40 °C [-40 °F]
 Max. temperature: 80 °C [176 °F]
 RoHS-compliant: Yes

Tip style data

Tip style: 006 serrated, outer- ϕ insulated
 Tip diameter: 2.3 mm [.09 in]
 Tip style surface: A gold
 Tip style material: 3 CuBe

Tip style: 006 serrated, outer- ϕ insulated
 Tip diameter: 2.3 mm [.09 in]
 Tip style surface: A gold
 Tip style material: 3 CuBe

Electrical data

Current load capacity / rated current: 8 A
 Typical resistance (Ri): 20 mOhm

Current load capacity / rated current: 8 A
 Typical resistance (Ri): 20 mOhm

Mechanical data

Total length: 39.2 mm [1.54 in]
 Barrel diameter: 1.66 mm [.065 in]
 Maximum stroke: 8 mm [.314 in]
 Spring pre-load: 0.71 N [2.55 ozf]
 Collar height: 05
 Spring force at working stroke: 3 N [10.7 ozf]
 Recommended working stroke: 6.4 mm [.251 in]

Test Probe

GKS-422 006 230 A 3005

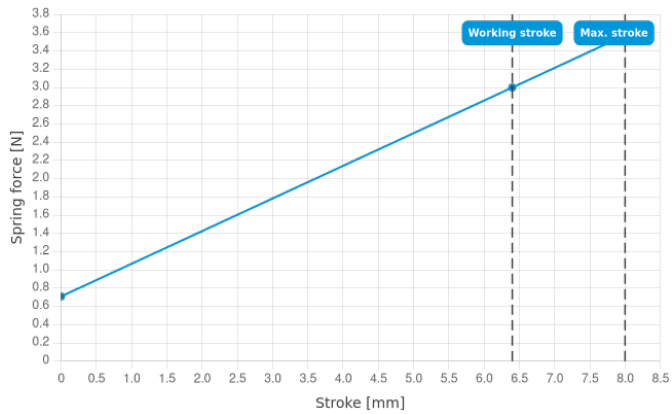
Item GKS-422-0338



GO TO PRODUCT

ingun®

Partner for Future Technology



INGUN Prüfmittelbau GmbH

Max-Stromeyer-Straße 162
78467, Constance, Germany
Phone +49 7531 8105-0
Customer hotline +49 7531 8105-888
Fax +49 7531 8105-65
info@ingun.com



Prices and delivery times on request.
Technical changes reserved. 05/26_GB

Learn more about
ICT/FCT Test probes



ingun.com