

Spare part kit, locking lever

ETK-SHA-MAxxxx

Item 54823

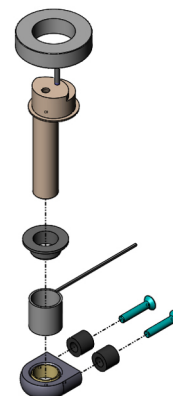


GO TO PRODUCT

ingun[®]

Partner for Future Technology

- Available for each component as kit or individual part including assembly drawing for easy replacement and safe installation
- Quick, easy maintenance
- Easy replacement by operators on site



General data

Product group:

Series:

Type:

Version:

Accessory type:

Scope of delivery:

Material:

RoHS-compliant:

Spare part kits

ETK-MAxxxx

Set

Clamping lever drive unit

Spare parts

Unassembled

2.0371

Yes

Compatible with

Exchangeable kits version:

Manual test fixtures (MA):

With interface

MA xxxx

INGUN Prüfmittelbau GmbH

Max-Stromeyer-Straße 162

78467, Constance, Germany

Phone +49 7531 8105-0

Customer hotline +49 7531 8105-888

Fax +49 7531 8105-65

info@ingun.com



Prices and delivery times on request.
Technical changes reserved. 05/26_GB

Learn more about
Test fixture kits

