

Manual test fixture MA 3211/D/H/S-5

Item 43950

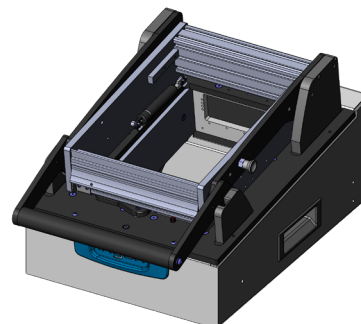


GO TO PRODUCT

ingun®

Partner for Future Technology

- Manual test fixtures with parallel closing drive mechanism for testing large PCB quantities with the highest quality and precision
- Ultra-robust long-life test fixture with increased parallel stroke of 21 mm
- Interchangeable set of test fixtures without preconfigured test system interface
- Standard, ESD, and RF exchangeable kits that can be installed without tools and used without readjustment
- Modularly configurable signal transmission using interface blocks, which can be quickly detached
- Detailed accompanying documents (e.g., customising guidelines)
- Maximum opening angle may vary due to the length tolerance of +/- 2 mm of the gas spring



Note:

By replacing the gas springs, an additional weight of 3 kg can be loaded onto the pressure frame for every 100 N increase.

General data

Test system interface:	Not pre-wired
Product group:	Manual test fixtures (MA)
Main series:	MA xxxx
Subseries:	MA 32xx
Series:	MA 3211
Size:	xx11
Test fixture type:	Exchangeable test fixture
Contact stroke generation:	Manual
Housing type:	Desk housing
Max. interface signals:	5
Interface blocks required:	Test system side
Max. internal interface blocks:	5
Contacting direction:	Double-sided (top/bottom)
Max. contact force:	2000 N [7,193 ozf]
Approx. parallel contact stroke:	22 mm [.866 in]
Weight:	11.7 kg [25.7 lbs]
Min. temperature:	10 °C [50 °F]
Max. temperature:	60 °C [140 °F]
Low voltage:	Yes, with suitable additional option
ESD-compliant:	Yes, with compatible exchangeable kit
RoHS-compliant:	Yes

Technical data

Test probe installation height, top:	16 mm [.629 in]
Test probe installation height, bottom:	10.5 mm [.413 in]
Test probe installation height, dual-stage, bottom:	16 mm [.629 in]
Free space above PCB:	58 mm [2.28 in]
Force of gas pressure springs:	200 N (L: 100 N / R: 100 N)
Pressure frame opening angle:	69 °
Standard version:	Yes, with compatible exchangeable kit
Useable area, standard (WxD):	150 x 240 mm [5.9 x 9.44 in]
ESD version:	Yes, with compatible exchangeable kit
Useable area, ESD (WxD):	150 x 240 mm [5.9 x 9.44 in]
Radio frequency version:	Yes, with compatible exchangeable kit
Useable area, radio frequency (WxD):	100 x 160 mm [3.93 x 6.29 in]
Rigid pin version:	No
Dual-stage version:	Yes, with compatible additional option
Useable area, dual-stage (WxD):	150 x 240 mm [5.9 x 9.44 in]
Additional contacting unit (ZSK), top:	Yes, with suitable additional option
Outer dimensions, open (WxDxH):	320 x 464 x 637 mm [12.5 x 18.2 x 25 in]
Outer dimensions, closed (WxDxH):	320 x 533 x 270 mm [12.5 x 20.9 x 10.6 in]

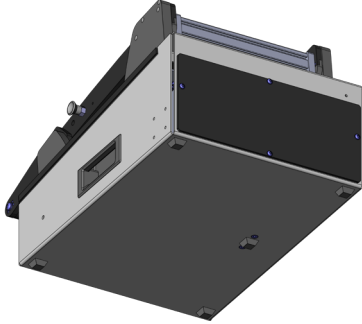
Manual test fixture MA 3211/D/H/S-5

Item 43950



ingun[®]

Partner for Future Technology



INGUN Prüfmittelbau GmbH

Max-Stromeyer-Straße 162
78467, Constance, Germany
Phone +49 7531 8105-0
Customer hotline +49 7531 8105-888
Fax +49 7531 8105-65
info@ingun.com



Prices and delivery times on request.
Technical changes reserved. 05/26_GB

Learn more about
Manual test fixtures (MA)



ingun.com