

Test plug

PS-HDMI2.0A-M-019-G5-B-01

Item 112626



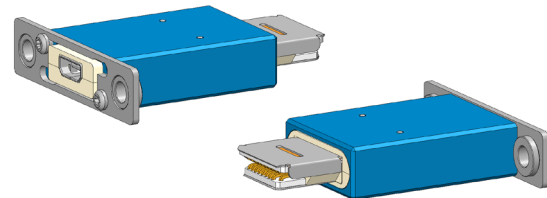
GO TO PRODUCT

ingun[®]

Partner for Future Technology

- Precise, low-wear contacting of HDMI plug connectors
- Reliable data transmission with original data rate
- Signal transmission via original connector plug
- Outstanding service life, up to 50,000 cycles under optimal conditions, depending on the version.
- Installation via floating mount recommended
- Optional spring elements (112863: set of 2) can compensate for tolerances of ± 0.4 mm and positioning inaccuracies of 2° .

INGUN SELECTION



General data

Product group:	PS test plug
Series:	PS
Sub-series:	PS-HDMI
Grid:	10.5 mm [413 mil]
DUT / contact:	HDMI-A
DUT interface gender :	F signal conductor female / socket
Floating mount:	No
Continuous plunger:	No
Interface of compatible assembly:	HDMI-D micro HDMI connector
Compatible assembly interface gender :	F signal conductor female / socket
Width:	21 mm [.826 in]
Height:	8 mm [.314 in]
Min. temperature:	-20 °C [-4 °F]
Max. temperature:	75 °C [167 °F]
RoHS-compliant:	Yes

Inner conductor data

Exchangeable inner conductor:	No
Inner conductor max. current load capacity:	0.3 A
Number of inner conductor poles:	19

Electrical data

Impedance:	90 Ohm
Max. data rate:	14 Gbit/s
Maximum performance:	1.5 W

Mechanical data

Total length:	40 mm [1.57 in]
Installation height without receptacle:	39 mm [1.53 in]

Test plug

PS-HDMI2.0A-M-019-G5-B-01

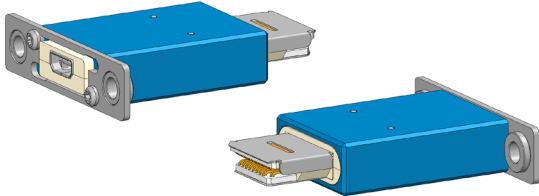
Item 112626



GO TO PRODUCT

ingun[®]

Partner for Future Technology



INGUN Prüfmittelbau GmbH

Max-Stromeyer-Straße 162
78467, Constance, Germany
Phone +49 7531 8105-0
Customer hotline +49 7531 8105-888
Fax +49 7531 8105-65
info@ingun.com



Prices and delivery times on request.
Technical changes reserved. 05/26_GB

Learn more about
Test probes

