

Interface support SSA-VPC-9025-MAxx12

Item 115680



GO TO PRODUCT

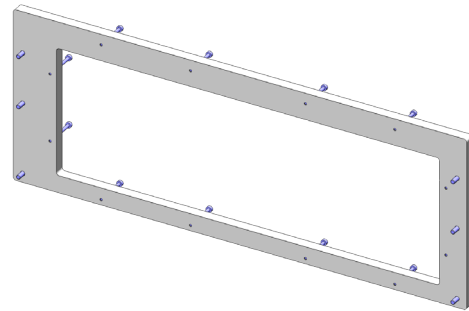
ingun[®]

Partner for Future Technology

- Interface support für VIRGINIA Panel 9025 interface
- Ideally designed for MA xx12 test fixtures
- Quick, easy installation on the back of the test fixture
- Reliable connection from test fixture to system interface

Application

The interface frame (SSA) is used for reliable connection of the interface (SST) to the test fixture.



General data

| | |
|--------------------|---------------------------|
| Product group: | Housing |
| Series: | SSA-MAxxxx |
| Type: | VPC-9025 (Virginia Panel) |
| Version: | MA xx12 |
| Accessory type: | Additional function |
| Scope of delivery: | Unassembled |
| Width: | 10 mm [.393 in] |
| Height: | 170 mm [6.69 in] |
| Weight: | 1 kg [2.2 lbs] |
| Min. temperature: | 10 °C [50 °F] |
| Max. temperature: | 60 °C [140 °F] |
| RoHS-compliant: | Yes |

Compatible with

| | |
|----------------------------|--------------|
| Manual test fixtures (MA): | MA xx12 |
| Accessories: | SST-VPC-9025 |

Technical data

| | |
|---------------------------|---|
| Length: | 451 mm [17.7 in] |
| Outer dimensionS (WxDxH): | 451 x 10 x 170 mm [17.7 x .393 x 6.69 in] |

INGUN Prüfmittelbau GmbH

Max-Stromeyer-Straße 162
78467, Constance, Germany
Phone +49 7531 8105-0
Customer hotline +49 7531 8105-888
Fax +49 7531 8105-65
info@ingun.com



Prices and delivery times on request.
Technical changes reserved. 05/26_GB

Learn more about
Test fixture kits

