

Cleaning mat

KRM-550-450-02

Item 112766



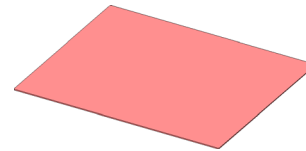
GO TO PRODUCT

ingun®

Partner for Future Technology

- Extremely thin cleaning mat
- Easily affixed to support plate for reinforcement
- Two support plate materials available
- Outstanding durability and cleaning effect
- Configured dummy PCBs

NEW



Application

Cleaning mats (KRM) are used to clean the tips of test probes which have accumulated residues during the test process. The new cleaning mat is only approximately 2 mm thick, is ideally designed to create dummy PCBs configured to the geometry of the device under test. The thin cleaning mat is affixed to a support plate, which provides reinforcement, with low pressure force using an adhesive film.

Application-specific PCB dummies are configured then created from the layered materials by machining processes, such as milling or water jet cutting. If customisation accessories such as PCB supports and push rods are used, holes for these must be cut out of the cleaning mat to ensure they meet the surface of the support plate.

The dummy PCB is inserted into the test fixture instead of the DUT for the cleaning process. When the fixture is closed, the tips of the test probes are pressed into the cleaning mat and the specialised composition of the cleaning mats works to clean the test probe tips. The support plate is available in two materials: FR4 (1.5 mm thick) and CEM1 (1.0 mm thick).

Usable area

This type of cleaning is particularly recommended for pointed, aggressive tip styles with self-cleaning properties, such as tip styles 01, 09, 15, 31, 77, 91, 97, and 98. Residues are dislodged from these tip styles more effectively than from other tip style geometries.

Special features

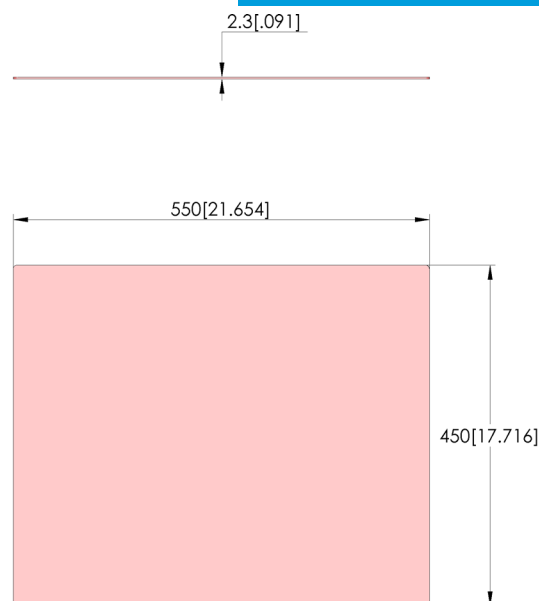
- Durability under laboratory conditions approx. 1000 punctures on one spot
- Typical groove depth is approximately 2.0 mm but depends on the spring force

Note:

Refer to the customising guidelines document INFO 4584 to ensure correct installation of the cleaning mat. The cleaning mat is affixed to the support plate using approximately 200 N/m² and can be loaded immediately. The adhesive quality of the unused double-sided adhesive film is guaranteed by the manufacturer for up to 6 months. The cleaning mat material contains compounds of silicone (SiO₂), aluminium (Al₂O₃), and titanium (TiO₂).

Note:

The cleaning effect and mechanical durability of the cleaning mat was tested in the INGUN laboratory using fully-automatic, computer-controlled endurance test stations. As the service life depends on several different factors, and in particular on the specific test application, INGUN does not guarantee the actual service life in the test field.



Cleaning mat KRM-550-450-02

Item 112766



GO TO PRODUCT

ingun[®]

Partner for Future Technology

General data

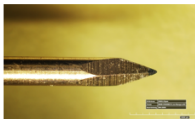
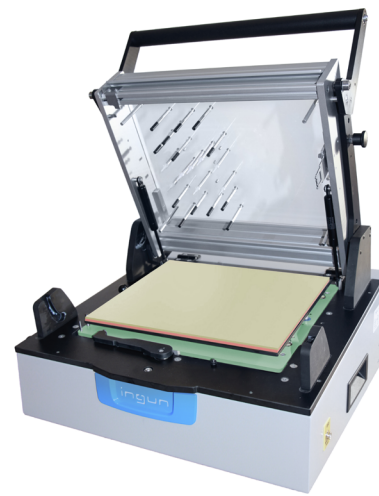
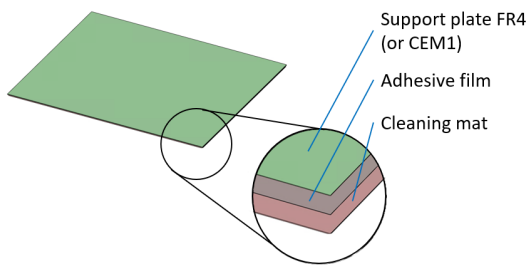
Product group:	Cleaning mat
Series:	KRM
Type:	Mat 2.3 mm
Version:	ESD charging possible
Accessory type:	Cleaning accessories
Material:	Silicone/quartz powder blend
Width:	550 mm [21.6 in]
Height:	2.3 mm [.09 in]
Weight:	0.57 kg [1.25 lbs]
Min. temperature:	-45 °C [-49 °F]
Max. temperature:	180 °C [356 °F]
RoHS-compliant:	Yes

Compatible with

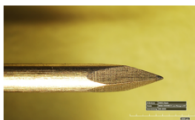
Exchangeable kits version: No limitations

Technical data

Useable area (WxD):	550 x 450 mm [21.6 x 17.7 in]
Length:	450 mm [17.7 in]
Outer dimensionS (WxDxH):	550 x 450 x 2,3 +/- 0,4 mm



Test probe tip after
0 penetration cycles



Test probe tip after
5 penetration cycles



Test probe tip after
10 penetration cycles

Accessories

Part no.	Designation	Version	Outer dim. (WxDxH)
62766	FR4-BGe-Z 550x 450x 1,50	FR4 support plate, both sides sanded	550 x 450 x 1.50 mm
62773	CEM1-Z 550x 450x 1,00	CEM1 support plate	550 x 450 x 1.00 mm
115046	KUN-DKB-Z 550x450x0,03	Double-sided adhesive film (silicone/acrylat)	550 x 450 x 0.03

Cleaning mat
KRM-550-450-02

Item 112766



ingun[®]

Partner for Future Technology

INGUN Prüfmittelbau GmbH

Max-Stromeyer-Straße 162
78467, Constance, Germany
Phone +49 7531 8105-0
Customer hotline +49 7531 8105-888
Fax +49 7531 8105-65
info@ingun.com



Prices and delivery times on request.
Technical changes reserved. 06/26_GB