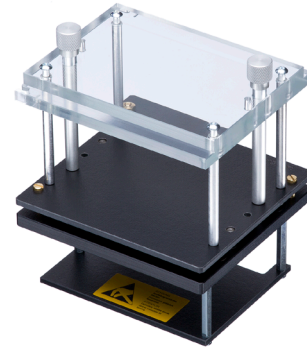




- Quick, tool-free set-up, can be used without readjustment
- Available in standard and ESD versions, without internal interface
- Signal transmission using VG multipoint connectors for individual configurations
- Pressure plate unit and probe plate unit can be screwed together with stacking screws to form a unit with protected probe field
- Robust, durable design
- Can be customised using functional units for individual configurations
- Detailed accompanying documents (e.g., customising guidelines)



# Exchangeable kit

## ATS MA350/ESD

Item 46490-KIT



GO TO PRODUCT

**ingun**<sup>®</sup>

Partner for Future Technology

### General data

Product group:	ATS manual test fixture (MA)
Subseries:	ATS MAxxx
Series:	ATS MA350
Version:	ESD without interface
Scope of delivery:	Unassembled
For tandem fixtures:	No
Max. interface signals:	150
Interface blocks required:	No
Max. internal interface blocks:	0
Internal interface:	Not available
Dual-stage contacting:	No
Double-sided contact:	Yes, with compatible additional option
Weight:	0.75 kg [1.65 lbs]
Min. temperature:	10 °C [50 °F]
Max. temperature:	60 °C [140 °F]
Low voltage:	No
RoHS-compliant:	Yes

### Compatible with

Manual test fixtures (MA):	MA 350
----------------------------	--------

### Technical data

Pushrod length:	60 mm [2.36 in]
Test probe installation height, top:	16 mm [.629 in]
Test probe installation height, bottom:	10.5 mm [.413 in]
Free space above PCB:	58 mm [2.28 in]
Permissible test voltage:	25VAC/60VDC
Useable area (WxD):	100 x 90 mm [3.93 x 3.54 in]
Outer dimensionS (WxDxH):	130 x 120 x 162 mm [5.11 x 4.72 x 6.37 in]

### INGUN Prüfmittelbau GmbH

Max-Stromeyer-Straße 162  
78467, Constance, Germany  
Phone +49 7531 8105-0  
Customer hotline +49 7531 8105-888  
Fax +49 7531 8105-65  
info@ingun.com



Prices and delivery times on request.  
Technical changes reserved. 06/26\_GB

Learn more about  
MA exchangeable kits



ingun.com