

# Push rod NHS-ST-20,0-6,0-KU-D3-ESD

Item 23503



GO TO PRODUCT

**ingun**<sup>®</sup>

Partner for Future Technology

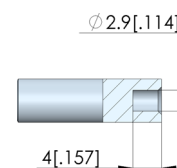
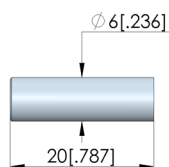
- Trusted push rods for reliable, rigid fixing of the PCB in the probe field against the force of the test probes
- Robust, pressure-resistant design
- Quick, easy installation

## Application

Push rods (NHS) are used in customisations to securely hold electronic circuit boards in place against the force of the test probes during contacting in the test fixture. Push rods are mounted in the pressure frame plate.



1:1



## General data

Product group:  
Series:  
Type:  
Version:  
Accessory type:  
Outer dimensions (TxL):  
RoHS-compliant:

Push rods (NHS)  
NHS-ST  
Rigid  
ESD ( Customising accessories  
6 x 20 mm [.236 x .787 in]  
Yes

## Mechanical data

Total length: 20 mm [.787 in]

## Technical data

Tip diameter: 6 mm [.236 in]  
Tip material: KU  
True running: 2768 fH  
Installation: Plugged  
Thread:  $\phi 2,9 \times 4$  mm  
Tip length: 20 mm [.787 in]

## INGUN Prüfmittelbau GmbH

Max-Stromeyer-Straße 162  
78467, Constance, Germany  
Phone +49 7531 8105-0  
Customer hotline +49 7531 8105-888  
Fax +49 7531 8105-65  
info@ingun.com



Prices and delivery times on request.  
Technical changes reserved. 06/26\_GB