

# Interface support

## SSA-4200/4250-VA4060

Item 113554



GO TO PRODUCT

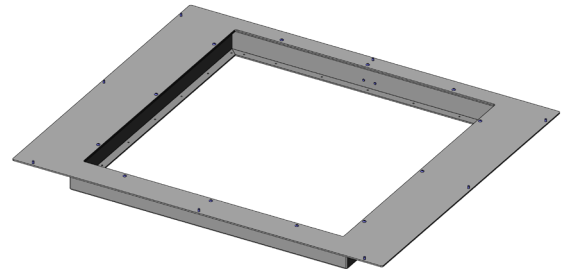
**ingun**<sup>®</sup>

Partner for Future Technology

- Interface support für AEROFLEX 4200/4250 (Marconi) interface
- Ideally designed for VA 4060 test fixtures
- Quick, easy installation on the bottom of the test fixture
- Reliable connection from test fixture to system interface

### Application

The interface frame (SSA) is used for reliable connection of the interface (SST) to the test fixture.



### General data

Product group:	Housing
Series:	SSA-VAxxxx
Type:	4200/4250 (Aeroflex)
Version:	VA 4060
Accessory type:	Additional function
Scope of delivery:	Unassembled
Width:	543 mm [21.3 in]
Height:	46 mm [1.81 in]
Weight:	1.45 kg [3.19 lbs]
Min. temperature:	10 °C [50 °F]
Max. temperature:	60 °C [140 °F]
RoHS-compliant:	Yes

### Compatible with

Vacuum test fixtures (VA):	VA 4060
Accessories:	SST-4200/4250

### Technical data

Length:	646 mm [25.4 in]
Outer dimensionS (WxDxH):	646 x 543 x 46 mm [25.4 x 21.3 x 1.81 in]

### INGUN Prüfmittelbau GmbH

Max-Stromeyer-Straße 162  
78467, Constance, Germany  
Phone +49 7531 8105-0  
Customer hotline +49 7531 8105-888  
Fax +49 7531 8105-65  
info@ingun.com



Prices and delivery times on request.  
Technical changes reserved. 05/26\_GB

Learn more about  
Test fixture kits

