

Battery contacting probe

BCP-120 314 230 A 3002

Item BCP-120-0001

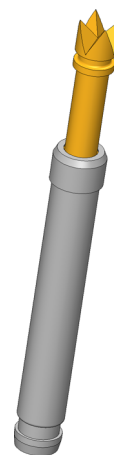


GO TO PRODUCT

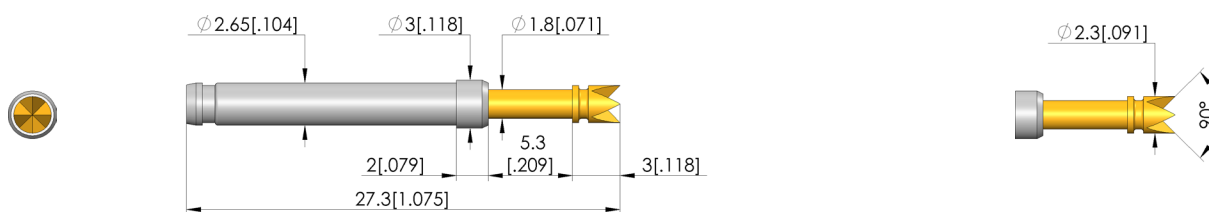
ingun[®]

Partner for Future Technology

- Contacting solution for prismatic and cylindrical cells such as 18600, 21700 and 46xx as well as coin cells
- Current rating upto 12A on Al DUT with temperature rise $dT \leq 20$ K ; max. current rating of 30A on high conducting materials like copper alloys
- Designed for a range of cell contacting applications such as formation, AC-IR, open circuit voltage (OCV) measurement and end-of-life (EOL) testing
- Low-resistance contact probe with R_i typical < 10 m Ω



1:1



General data

Product group:	Battery Contacting
Sub-product group:	Standard BCP (press-in)
Series:	BCP-120
Application rec.:	
Grid:	4 mm [157 mil]
DUT / contact:	
Magnetic:	Yes
Installation type:	Plug-in
Quick-exchange system:	Yes
Adjustable installation height:	No
Non-rotating:	No
Compatible receptacle(s):	KS-113
Min. temperature:	-100 °C [-148 °F]
Max. temperature:	200 °C [392 °F]
RoHS-compliant:	Yes

Electrical data

Current load capacity / rated current:	30 A
Rated current on copper @ $\Delta T \leq 20$ K:	20 A
Rated current on copper @ $\Delta T \leq 60$ K:	30 A
Rated current on aluminium @ $\Delta T \leq 20$ K:	12 A
Rated current on aluminium @ $\Delta T \leq 60$ K:	20 A
Typical resistance (R_i):	10 mOhm

Mechanical data

Total length:	27.3 mm [1.07 in]
Barrel diameter:	2.65 mm [.104 in]
Maximum stroke:	5.3 mm [.208 in]
Spring pre-load:	0.71 N [2.55 ozf]
Collar height:	02
Spring force at working stroke:	3 N [10.7 ozf]
Recommended working stroke:	4 mm [.157 in]

Tip style data

Tip style:	14 4-point crown, self-cleaning
Tip diameter:	2.3 mm [.09 in]
Tip style surface:	A gold
Tip style material:	3 CuBe

Battery contacting probe

BCP-120 314 230 A 3002

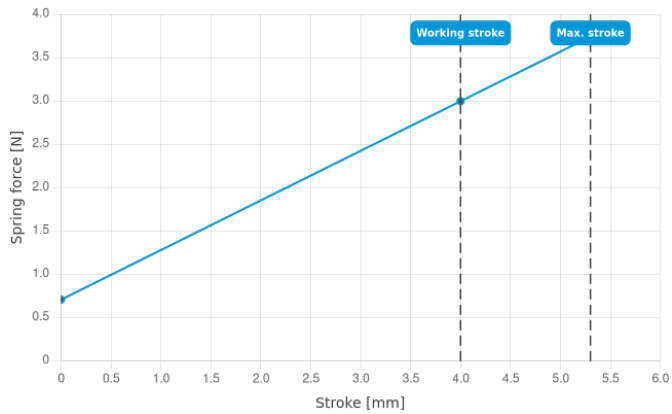
Item BCP-120-0001



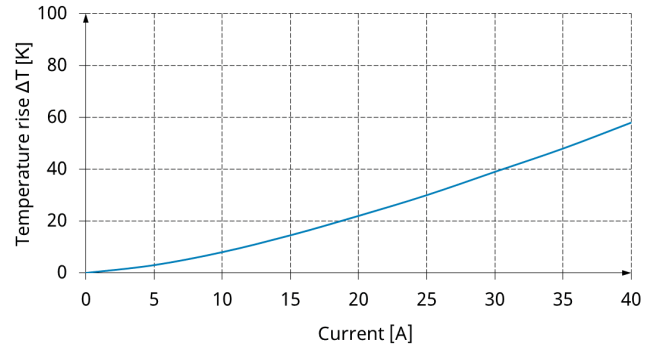
GO TO PRODUCT

ingun[®]

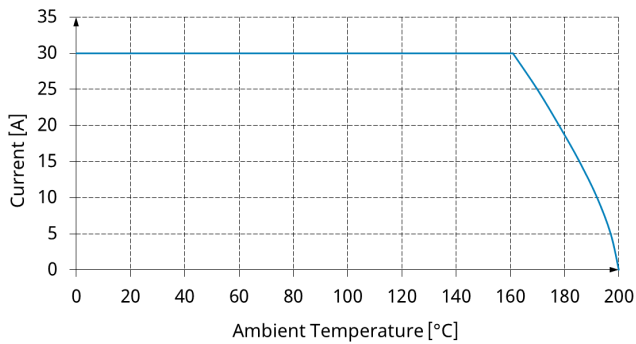
Partner for Future Technology



Current Rating



Current Derating



INGUN Prüfmittelbau GmbH

Max-Stromeyer-Straße 162
78467, Constance, Germany
Phone +49 7531 8105-0
Customer hotline +49 7531 8105-888
Fax +49 7531 8105-65
info@ingun.com



Prices and delivery times on request.
Technical changes reserved. 06/26_GB

Learn more about
Test probes

