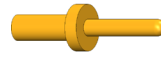




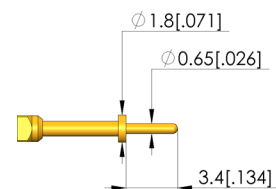
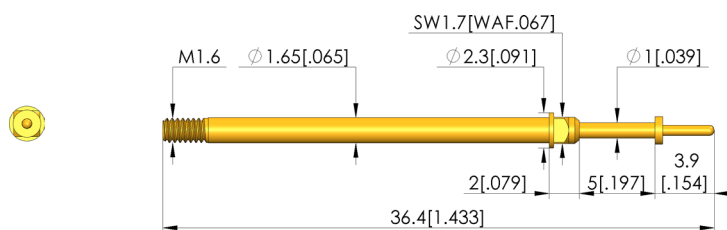
Positionstest

Zur Überprüfung der korrekten Position des Kontaktterminals im Steckergehäuse

- Step probes are used to test the correct position of the contact terminals (contact lamellae) in the plug housings. A connection test can be carried out at the same time. Contact will only occur when the tip of the step probe is correctly positioned
- For optimum contacting, various tip styles are available in various tip ϕ , disc ϕ and pin lengths



1:1



General data

| | |
|---------------------------------|--------------------------------|
| Screw-in torque max.: | 5 cNm [.442 lbf-in] |
| Product group: | Step probes |
| Sub-product group: | Step probes |
| Series: | T-112 |
| Grid: | 2.54 mm [100 mil] |
| Contacting from: | Pad |
| Magnetic: | Yes |
| Installation type: | Screw-in |
| Quick-exchange system: | Yes |
| Adjustable installation height: | No |
| Non-rotating: | No |
| Screw-in torque: | 3 – 5 cNm [.265 – .442 lbf-in] |
| Compatible receptacle(s): | KS-112 M |
| Min. temperature: | -40 °C [-40 °F] |
| Max. temperature: | 80 °C [176 °F] |
| RoHS-compliant: | Yes |

Tip style data

| | |
|------------------------|-------------------------------|
| Tip style: | 05 bullet-nosed (full radius) |
| Tip diameter: | 0.65 mm [.025 in] |
| Tip style surface: | A gold |
| Tip style material: | 3 CuBe |
| Step probe tip height: | 3.4 mm [.133 in] |
| Disk diameter: | 1.8 mm [.07 in] |

Electrical data

| | |
|--|---------|
| Current load capacity / rated current: | 5 A |
| Typical resistance (Ri): | 20 mOhm |

Mechanical data

| | |
|---------------------------------|-------------------|
| Total length: | 36.4 mm [1.43 in] |
| Barrel diameter: | 1.65 mm [.064 in] |
| Maximum stroke: | 5 mm [.196 in] |
| Spring pre-load: | 0.6 N [2.15 ozf] |
| Collar height: | 02 |
| Spring force at working stroke: | 1.5 N [5.39 ozf] |
| Recommended working stroke: | 4 mm [.157 in] |

INGUN Prüfmittelbau GmbH

Max-Stromeyer-Straße 162
78467, Constance, Germany
Phone +49 7531 8105-0
Customer hotline +49 7531 8105-888
Fax +49 7531 8105-65
info@ingun.com



Learn more about
Screw-in test probe

