

# Push rod

## NHS-ST-65,6-6,0-AL ATS MA

Item 41369



GO TO PRODUCT

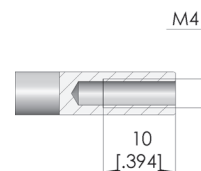
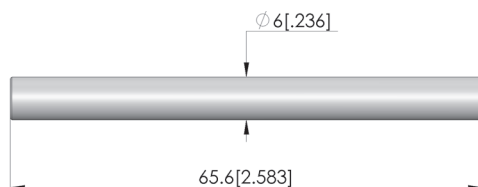
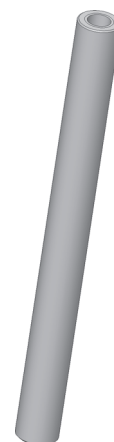
**ingun**<sup>®</sup>

Partner for Future Technology

- Trusted push rods for reliable, rigid fixing of the PCB in the probe field against the force of the test probes
- Robust, pressure-resistant design
- Quick, easy installation

### Application

Push rods (NHS) are used in customisations to securely hold electronic circuit boards in place against the force of the test probes during contacting in the test fixture. Push rods are mounted in the pressure frame plate.



### General data

Product group:

Series:

Type:

Version:

Accessory type:

Outer dimensions (TxL):

Colour:

RoHS-compliant:

Push rods (NHS)

NHS-ST

Rigid

Not ESD compliant

Customising accessories

6 x 65.6 mm [0.236 x 2.58 in]

Grey

Yes

### Compatible with

Exchangeable kits version:

MA exchangeable kits (ATS MA):

ESD

ATS MAxx

### Technical data

Tip diameter:

6 mm [0.236 in]

Pushrod shaft diameter:

6 mm [0.236 in]

Tip material:

3.3206

Shaft material:

3.3206

True running:

2768 fH

Installation:

Screwed in

Thread:

M4x10 mm

Tip length:

20 mm [0.787 in]

### Mechanical data

Total length:

65.6 mm [2.58 in]

### INGUN Prüfmittelbau GmbH

Max-Stromeyer-Straße 162

78467, Constance, Germany

Phone +49 7531 8105-0

Customer hotline +49 7531 8105-888

Fax +49 7531 8105-65

info@ingun.com



Prices and delivery times on request.  
Technical changes reserved. 06/26\_GB