

# ESD discharge probe FB-ALS-WS-SP-3030

Item 60290



GO TO PRODUCT

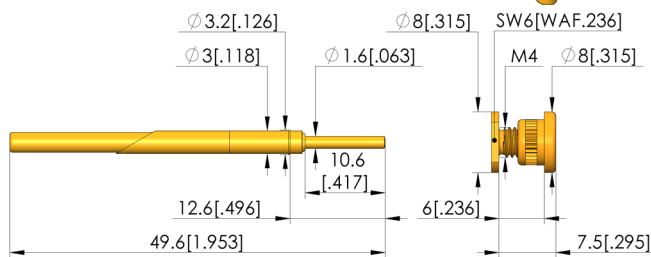
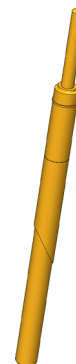
**ingun**<sup>®</sup>

Partner for Future Technology

- Reliable dissipation of electrostatic discharges that occur as a result of potential differences
- Quick, easy installation

## Application

The ESD discharge contact is used for the reliable discharge of any electrostatic discharges that may occur as a result of potential differences. It is installed in the probe plate and the moving plate.



## General data

Product group:  
Series:  
Type:  
Version:  
Accessory type:  
Scope of delivery:  
Component assembly:  
Weight:  
Min. temperature:  
Max. temperature:  
RoHS-compliant:

Functional units  
FB-WS  
ESD discharge contact  
Single-stage contacting  
Customising accessories  
Unassembled  
GKS-114-0015  
0.01 kg [0.022 lbs]  
10 °C [50 °F]  
60 °C [140 °F]  
Yes

## Compatible with

Interchangeable kits (WS):

WS SPEA/3030

## Technical data

Stroke:  
Length:  
Diameter:

16 mm [0.629 in]  
49.5 mm [1.94 in]  
3 mm [0.118 in]

## INGUN Prüfmittelbau GmbH

Max-Stromeyer-Straße 162  
78467, Constance, Germany  
Phone +49 7531 8105-0  
Customer hotline +49 7531 8105-888  
Fax +49 7531 8105-65  
info@ingun.com



Prices and delivery times on request.  
Technical changes reserved. 06/26\_GB

Learn more about  
WS functional units

