

# Insertion Tool BIT-GKS-747 M

Item BIT-GKS-747M



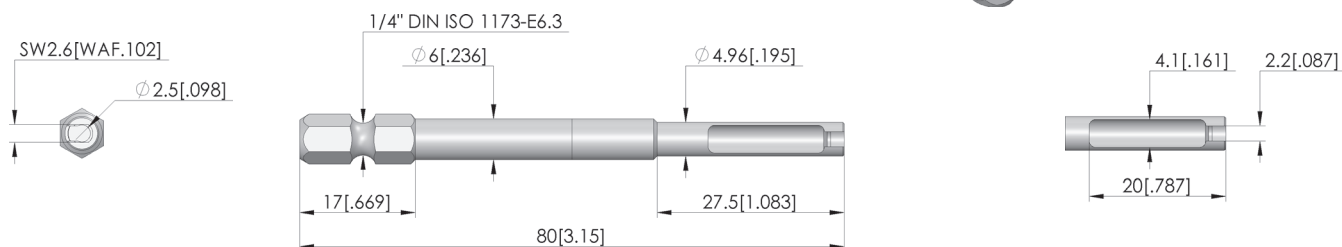
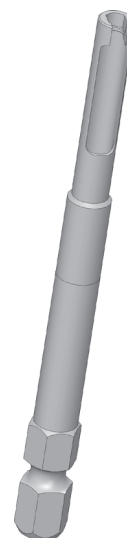
GO TO PRODUCT

**ingun**<sup>®</sup>

Partner for Future Technology

## BIT-Werkzeug

Zum Ein- und Ausschrauben von  
Kontaktstiften



### General data

Screw-in torque max.:	20 cNm [1.77 lbf·in]
Product group:	Bit inserts (BIT)
Compatible test probe(s) / receptacle(s):	016 GKS-747
Series:	BIT-GKS
Tool for receptacle (KS):	No
Tool for test probe (GKS):	Yes
Test probe installation type:	Screw-in
Min. tip diameter:	0 mm [0 in]
Max. tip diameter:	4 mm [1.57 in]
Tool version:	Rigid
Screw-in torque:	10 – 20 cNm [.885 – 1.77 lbf·in]
RoHS-compliant:	Yes

### INGUN Prüfmittelbau GmbH

Max-Stromeyer-Straße 162  
78467, Constance, Germany  
Phone +49 7531 8105-0  
Customer hotline +49 7531 8105-888  
Fax +49 7531 8105-65  
info@ingun.com



Prices and delivery times on request.  
Technical changes reserved. 06/26\_GB

Learn more about  
Tool



ingun.com