

# Mounting plate unit

## MTE MA14/U

Item 114416



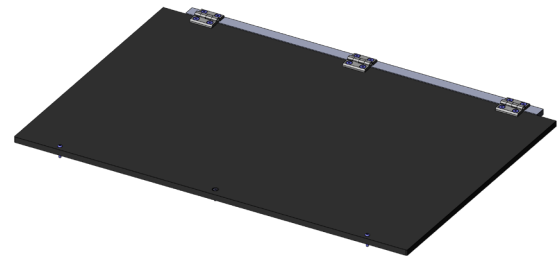
**ingun**<sup>®</sup>

Partner for Future Technology

- Closed mounting plate for MA xx14 housing (PGH MA14/TDS/BG)
- Incl. installation accessories
- Quick, easy installation

### Application

Closed mounting plate for MA xx14 housing (PGH MA14/TDS/BG) for mounting a basic unit.



### General data

Product group:	Housing
Series:	MTE-MAxxxx
Type:	Mounting plate MA14/U
Version:	ESD
Accessory type:	Additional function
Scope of delivery:	Must be installed upon delivery, installation
accessories included	
Material:	FR3 (EP 105-AS)
Width:	471 mm [18.5 in]
Height:	19 mm [.748 in]
Weight:	6.5 kg [14.3 lbs]
Min. temperature:	10 °C [50 °F]
Max. temperature:	60 °C [140 °F]
RoHS-compliant:	Yes

### Compatible with

Manual test fixtures (MA):	PGH MA14/TDS
Accessories:	PGH MA14/TDS

### Technical data

Length:	716 mm [28.1 in]
Outer dimensionS (WxDxH):	716 x 471 x 19 mm [28.1 x 18.5 x .748 in]

Mounting plate unit

## MTE MA14/U

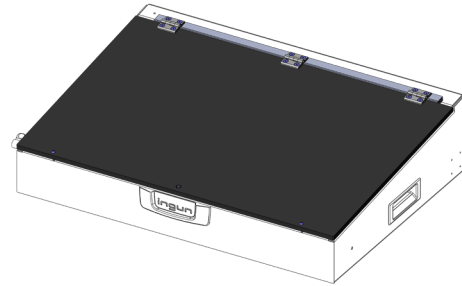
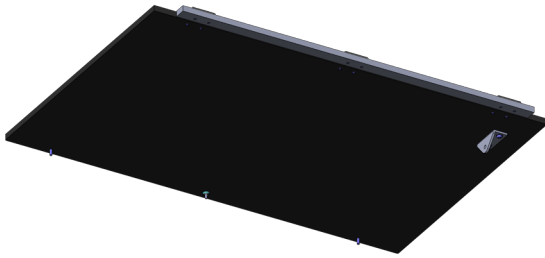
Item 114416



GO TO PRODUCT

**ingun**<sup>®</sup>

Partner for Future Technology



### INGUN Prüfmittelbau GmbH

Max-Stromeyer-Straße 162  
78467, Constance, Germany  
Phone +49 7531 8105-0  
Customer hotline +49 7531 8105-888  
Fax +49 7531 8105-65  
info@ingun.com



Prices and delivery times on request.  
Technical changes reserved. 05/26\_GB

Learn more about  
Test fixture kits

