

# Interface support SSA-VPC-S6-VA4030

Item 113593



GO TO PRODUCT

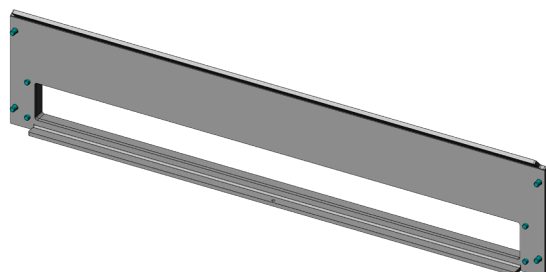
**ingun**<sup>®</sup>

Partner for Future Technology

- Interface support für VIRGINIA Panel S6 interface
- Ideally designed for VA 4030 test fixtures
- Quick, easy installation on the back of the test fixture
- Reliable connection from test fixture to system interface

## Application

The interface frame (SSA) is used for reliable connection of the interface (SST) to the test fixture.



## General data

Product group:	Housing
Series:	SSA-VAXxxx
Type:	VPC-S6 (Virginia Panel)
Version:	VA 4030
Accessory type:	Additional function
Scope of delivery:	Unassembled
Width:	20 mm [.787 in]
Height:	101 mm [3.97 in]
Weight:	0.51 kg [1.12 lbs]
Min. temperature:	10 °C [50 °F]
Max. temperature:	60 °C [140 °F]
RoHS-compliant:	Yes

## Compatible with

Vacuum test fixtures (VA):	VA 4030
Accessories:	SST-VPC-S6

## Technical data

Length:	455 mm [17.9 in]
Outer dimensionS (WxDxH):	455 x 20 x 101 mm [17.9 x .787 x 3.97 in]

## INGUN Prüfmittelbau GmbH

Max-Stromeyer-Straße 162  
78467, Constance, Germany  
Phone +49 7531 8105-0  
Customer hotline +49 7531 8105-888  
Fax +49 7531 8105-65  
info@ingun.com



Prices and delivery times on request.  
Technical changes reserved. 05/26\_GB

Learn more about  
Test fixture kits

