



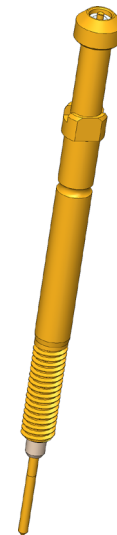
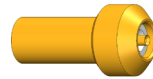
GO TO PRODUCT

Durchgangsprüfung

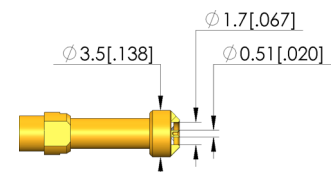
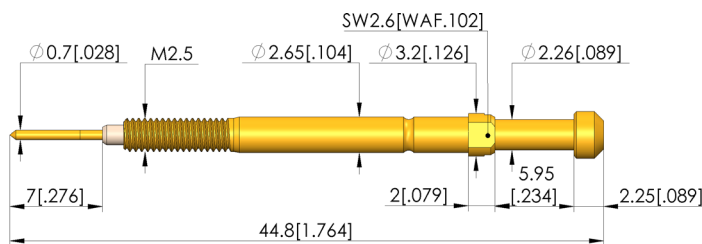
Zur Überprüfung von möglichen offenen Verbindungen und Kurzschlüssen bei koaxialen Steckverbindern

- mit Gewinde zum sicheren Halt in der Kontaktsteckhülse

NEW



1:1





GO TO PRODUCT

General data

Screw-in torque max.:	5 cNm [.442 lbf·in]
Product group:	DPS dipole test probe
Series:	DPS-465
Sub-series:	DPS-465 M screw-in
Grid:	4 mm [.157 mil]
DUT / contact:	Mini Coax MATE-AX & HFM
Installation type:	Screw-in
DUT interface gender :	M signal conductor male / pin
Floating mount:	No
Non-rotating:	No
Continuous plunger:	No
KS sub-series:	KS-465 M-F screw-in version
Min. temperature:	-40 °C [-40 °F]
Max. temperature:	80 °C [176 °F]
RoHS-compliant:	Yes

Outer conductor data

Outer conductor tip style:	42 centring for inner side of plug connector
Outer conductor tip style diameter:	3.5 mm [.137 in]
Spring force of entire outer conductor at working stroke:	3 N [10.7 ozf]
Outer conductor working stroke:	4 mm [.157 in]
Outer conductor maximum stroke:	5 mm [.196 in]
Exchangeable outer conductor:	No
Outer conductor max. current load capacity:	10 A

Inner conductor data

Inner conductor tip style:	43 inverse cone with chamfered bore
Inner conductor tip style diameter:	0.51 mm [.02 in]
Inner conductor tip style material:	3 CuBe
Inner conductor tip style surface:	A gold
Number of inner conductors:	1
Exchangeable inner conductor:	No
Inner conductor working stroke:	4 mm [.157 in]
Spring force of each inner conductor at working stroke:	1 N [3.59 ozf]
Inner conductor maximum stroke:	5 mm [.196 in]
Inner conductor max. current load capacity:	2 A

Mechanical data

Total spring force at working stroke:	4 N [14.3 ozf]
Total length:	44.8 mm [1.76 in]
Barrel diameter:	2.65 mm [.104 in]
Installation height without receptacle:	10.2 mm [.401 in]
Torque in receptacle:	3 – 5 cNm [.265 – .442 lbf·in]

INGUN Prüfmittelbau GmbH

Max-Stromeyer-Straße 162
78467, Constance, Germany
Phone +49 7531 8105-0
Customer hotline +49 7531 8105-888
Fax +49 7531 8105-65
info@ingun.com



Learn more about
Test probes

