

Detection - locked

FB-ABF-V-I-MA32xx

Item 46745

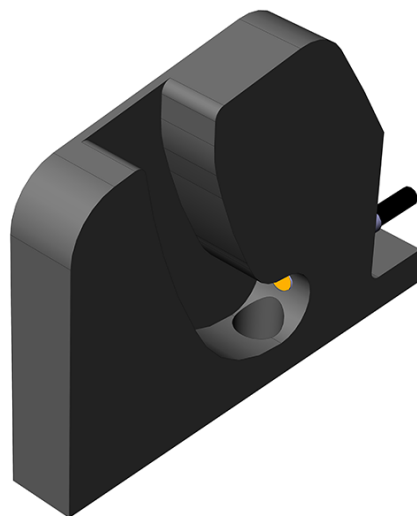


GO TO PRODUCT

ingun[®]

Partner for Future Technology

- Upgrade kits to make operation easier, increase the testing reliability, and to reduce handling times
- Available for manual test fixtures and exchangeable kits
- Wide range of varying functions



General data

Product group:
Series:
Type:
Version:
Accessory type:
Width:
Height:
RoHS-compliant:

Detection units
FB-MAxxxx
Inductive sensor
Locked pressure frame unit (NDH)
Additional function
12 mm [.472 in]
62 mm [2.44 in]
Yes

Compatible with

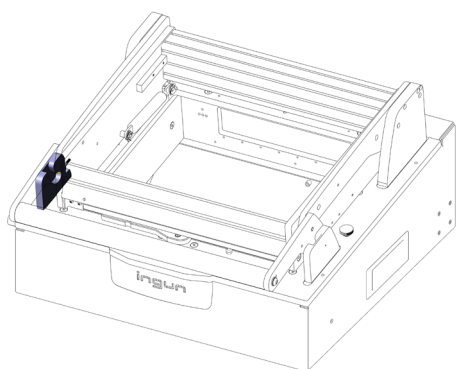
Exchangeable kits version:
Manual test fixtures (MA):
For dual-stage contacting:

No limitations
MA 32xx
No

Technical data

Installation:
Length:
Outer dimensionS (WxDxH):

Thread M5
84 mm [3.3 in]
12 x 84 x 62 mm [.472 x 3.3 x 2.44 in]



INGUN Prüfmittelbau GmbH

Max-Stromeyer-Straße 162
78467, Constance, Germany
Phone +49 7531 8105-0
Customer hotline +49 7531 8105-888
Fax +49 7531 8105-65
info@ingun.com



Prices and delivery times on request.
Technical changes reserved. 05/26_GB

Learn more about
MA functional units



FUNCTIONAL UNIT

ingun.com