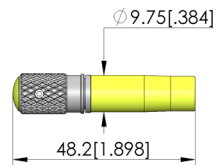
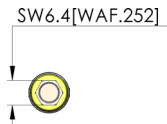
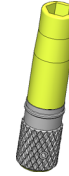
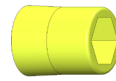




GO TO PRODUCT

Drehmomentschlüssel Für BIT-Werkzeug



General data

Screw-in torque max.:	3 cNm [.265 lbf·in]
Product group:	Torque wrench (DW)
Series:	DW
Tool for receptacle (KS):	No
Tool for test probe (GKS):	Yes
Test probe installation type:	Screw-in
Tool version:	Pre-set
Screw-in torque:	3 cNm [.265 lbf·in]
RoHS-compliant:	Yes

INGUN Prüfmittelbau GmbH

Max-Stromeyer-Straße 162
78467, Constance, Germany
Phone +49 7531 8105-0
Customer hotline +49 7531 8105-888
Fax +49 7531 8105-65
info@ingun.com



Learn more about
Tool

