

# Push rod

## NHS-ST-36,4-2,5-POM-AL

Item 17712



GO TO PRODUCT

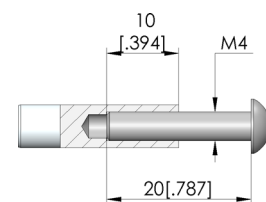
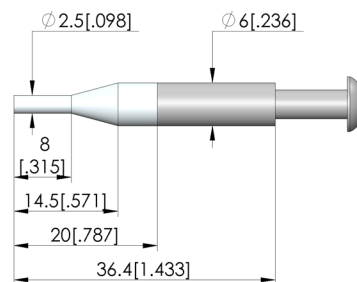
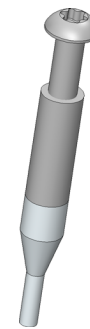
ingun®

Partner for Future Technology

- Trusted push rods for reliable, rigid fixing of the PCB in the probe field against the force of the test probes
- Robust, pressure-resistant design
- Quick, easy installation

### Application

Push rods (NHS) are used in customisations to securely hold electronic circuit boards in place against the force of the test probes during contacting in the test fixture. Push rods are mounted in the pressure frame plate.



### General data

Product group:	Push rods (NHS)
Series:	NHS-ST
Type:	Rigid
Version:	Not ESD compliant
Accessory type:	Customising accessories
Outer dimensions (TxL):	6 x 36.4 mm [.236 x 1.43 in]
Colour:	Untreated
RoHS-compliant:	Yes

### Mechanical data

Total length:	36.4 mm [1.43 in]
---------------	-------------------

### Compatible with

Exchangeable kits version:  
PA exchangeable kits (ATS PA):

ESD  
ATS PAZxxx

### Technical data

Tip diameter:	2.5 mm [.098 in]
Pushrod shaft diameter:	6 mm [.236 in]
Tip material:	POM
Shaft material:	AL
True running:	2768 mK
Installation:	Screwed in
Thread:	M4x10 mm
Tip length:	20 mm [.787 in]

### INGUN Prüfmittelbau GmbH

Max-Stromeyer-Straße 162  
78467, Constance, Germany  
Phone +49 7531 8105-0  
Customer hotline +49 7531 8105-888  
Fax +49 7531 8105-65  
info@ingun.com



Prices and delivery times on request.  
Technical changes reserved. 06/26\_GB