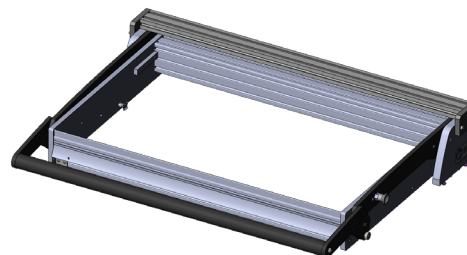




GO TO PRODUCT

- Parallel closing drive mechanism without mounting plate, without internal interface
- High contact force
- Freely configurable signal transmission
- Quick, easy, precise installation
- Can be used for various applications



### General data

Product group:	Manual drive unit
Main series:	ATM MAxxxx
Subseries:	ATM MA2xxx
Series:	ATM MA21xx
Size:	2114
Test fixture type:	Without mounting plate
Contact stroke generation:	Manual
Max. interface signals:	1700
Interface blocks required:	No
Max. contact force:	2000 N [7,193 ozf]
Approx. parallel contact stroke:	15 mm [,59 in]
Min. temperature:	10 °C [50 °F]
Max. temperature:	60 °C [140 °F]
RoHS-compliant:	Yes

### Technical data

Pressure frame closing force:	120 N [431 ozf]
Pressure frame opening angle:	69 °
Outer dimensions, closed (WxDxH):	679 x 524 x 101 mm [26.7 x 20.6 x 3.97 in]

### INGUN Prüfmittelbau GmbH

Max-Stromeyer-Straße 162  
78467, Constance, Germany  
Phone +49 7531 8105-0  
Customer hotline +49 7531 8105-888  
Fax +49 7531 8105-65  
info@ingun.com



Learn more about  
Test fixture kits

