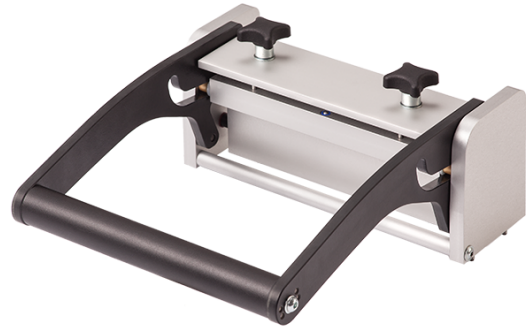




GO TO PRODUCT

- Parallel closing drive mechanism without mounting plate, without internal interface
- High contact force
- Freely configurable signal transmission
- Quick, easy, precise installation
- Can be used for various applications



General data

Product group:	Manual drive unit
Main series:	ATM MAxxx
Series:	ATM MA2xx
Size:	260
Test fixture type:	Without mounting plate
Contact stroke generation:	Manual
Max. interface signals:	150
Interface blocks required:	No
Max. contact force:	300 N [1,079 ozf]
Approx. parallel contact stroke:	15 mm [.59 in]
Min. temperature:	10 °C [50 °F]
Max. temperature:	60 °C [140 °F]
RoHS-compliant:	Yes

Technical data

Pressure frame closing force:	60 N [215 ozf]
Pressure frame opening angle:	50 °
Outer dimensions, open (WxDxH):	250 x 135 x 245 mm [9.84 x 5.31 x 9.64 in]
Outer dimensions, closed (WxDxH):	250 x 290 x 125 mm [9.84 x 11.4 x 4.92 in]

INGUN Prüfmittelbau GmbH

Max-Stromeyer-Straße 162
78467, Constance, Germany
Phone +49 7531 8105-0
Customer hotline +49 7531 8105-888
Fax +49 7531 8105-65
info@ingun.com



Learn more about
Test fixture kits

