

Interface block

KB-P-SI-020-24A-L-ASYS

Item 49906



GO TO PRODUCT

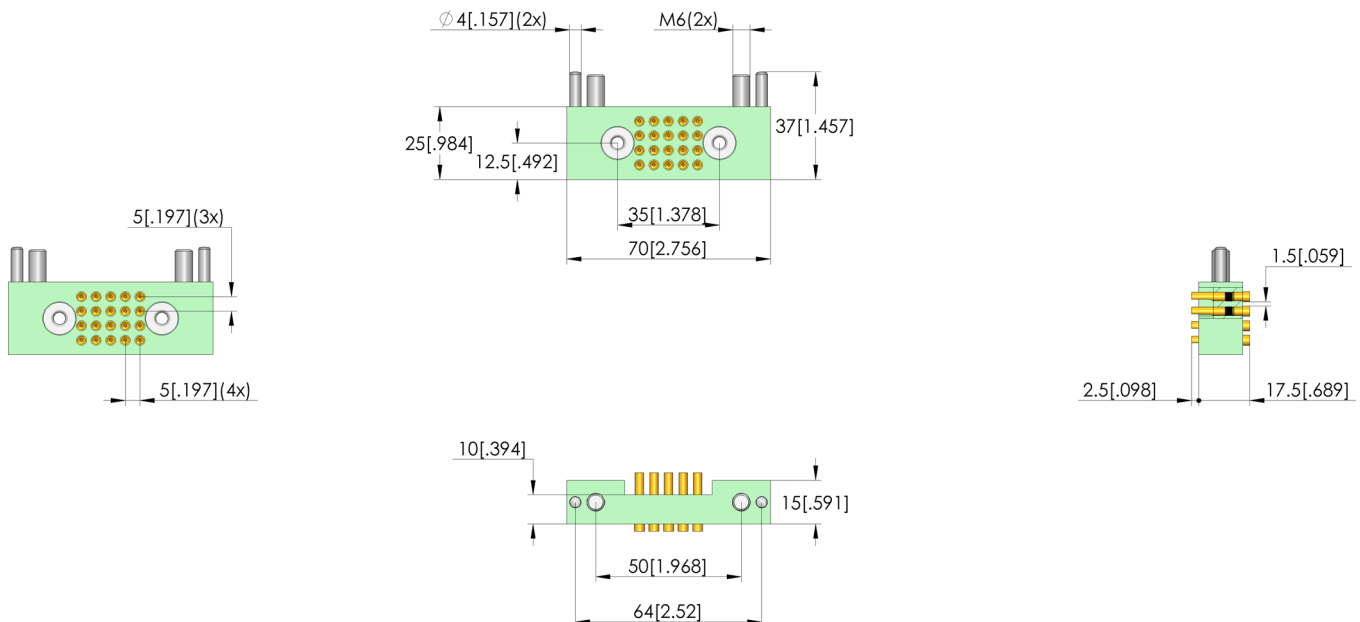
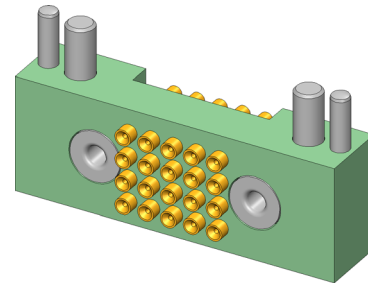
ingun®

Partner for Future Technology

- Trusted interface block for inline interchangeable kits WS ASYS/ATH01/173,5 und WS ASYS/ATH01/210,5
- Populated with INGUN KT-120 L3 E02-30 contact terminals
- Consistently low contact resistances and replicable measured values
- High contact reliability and transmission quality

Application

Using the contact block ensures reliable transmission of signals between the test equipment and the test system. The contact block is used as an coding block for the reliable transmission of low-voltage signals within the scope of its specification.



General data

Product group:
Series:
Type:
Version:
Accessory type:
Component assembly:
Weight:
Min. temperature:
Max. temperature:
RoHS-compliant:

Interface blocks (SB)
SB-SI
Signal block
WS interface
Customising accessories
KT-120L3E02-30 (solder)
0.07 kg [.154 lbs]
10 °C [50 °F]
60 °C [140 °F]
Yes

Compatible with

Compatible mating part 1:
Inline interchangeable kits (WS):

KB-T-SI-020-24A-L-ASYS
WS ASYS/ATH01/...

Technical data

Centring pin:
Connection:
Number of poles:
Max. current of one GKS:
Min. line cross-section:

+/- 0,05 mm
Solder cup
20
24 A
1.5 mm² [.002 in²]

Electrical data

Typical resistance (Ri) of one GKS:

5 mOhm

Interface block

KB-P-SI-020-24A-L-ASYS

Item 49906



ingun[®]

Partner for Future Technology

Interface block

Part no. EN	Designation	Tip version EN
49907	KB-T-SI-020-24A-L-ASYS	Interface block

Inline interchangeable kit

Part no. EN	Designation	Tip version EN
116630	WS ASYS/ATH01/173,5	Interchangeable kit
116641	WS ASYS/ATH01/210,5	Interchangeable kit

INGUN Prüfmittelbau GmbH

Max-Stromeyer-Straße 162
78467, Constance, Germany
Phone +49 7531 8105-0
Customer hotline +49 7531 8105-888
Fax +49 7531 8105-65
info@ingun.com



Prices and delivery times on request.
Technical changes reserved. 06/26_GB