

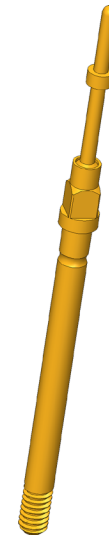
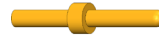


GO TO PRODUCT

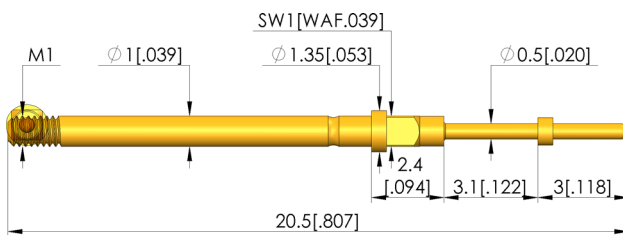
Positionstest

Zur Überprüfung der korrekten Position des Kontaktterminals im Steckergehäuse

- Step probes are used to test the correct position of the contact terminals (contact lamellae) in the plug housings. A connection test can be carried out at the same time. Contact will only occur when the tip of the step probe is correctly positioned
- For optimum contacting, various tip styles are available in various tip ϕ , disc ϕ and pin lengths



1:1



General data

| | |
|---------------------------------|-----------------------------------|
| Screw-in torque max.: | 1 cNm [0.088 lbf-in] |
| Product group: | Step probes |
| Sub-product group: | Step probes |
| Series: | T-001 |
| Grid: | 1.91 mm [75.1 mil] |
| Contacting from: | Pad |
| Magnetic: | Yes |
| Installation type: | Screw-in |
| Quick-exchange system: | Yes |
| Adjustable installation height: | No |
| Non-rotating: | No |
| Screw-in torque: | .5 - 1 cNm [0.044 - 0.088 lbf-in] |
| Compatible receptacle(s): | KS-001 M |
| Min. temperature: | -40 °C [-40 °F] |
| Max. temperature: | 80 °C [176 °F] |
| RoHS-compliant: | Yes |

Tip style data

| | |
|------------------------|-------------------------------|
| Tip style: | 05 bullet-nosed (full radius) |
| Tip diameter: | 0.5 mm [0.019 in] |
| Tip style surface: | A gold |
| Tip style material: | 3 CuBe |
| Step probe tip height: | 2.5 mm [0.098 in] |
| Disk diameter: | 0.9 mm [0.035 in] |

Electrical data

| | |
|--|---------|
| Current load capacity / rated current: | 4 A |
| Typical resistance (RI): | 20 mOhm |

Mechanical data

| | |
|---------------------------------|--------------------|
| Total length: | 20.5 mm [0.807 in] |
| Barrel diameter: | 1 mm [0.039 in] |
| Maximum stroke: | 3 mm [0.118 in] |
| Spring pre-load: | 0.27 N [0.971 ozf] |
| Collar height: | 02 |
| Spring force at working stroke: | 0.8 N [2.87 ozf] |
| Recommended working stroke: | 2.4 mm [0.094 in] |

INGUN Prüfmittelbau GmbH

Max-Stromeyer-Straße 162
78467, Constance, Germany
Phone +49 7531 8105-0
Customer hotline +49 7531 8105-888
Fax +49 7531 8105-65
info@ingun.com



Learn more about
Screw-in test probe

