

Pneumatic test fixture

PA 2130/D/H

Item 20598

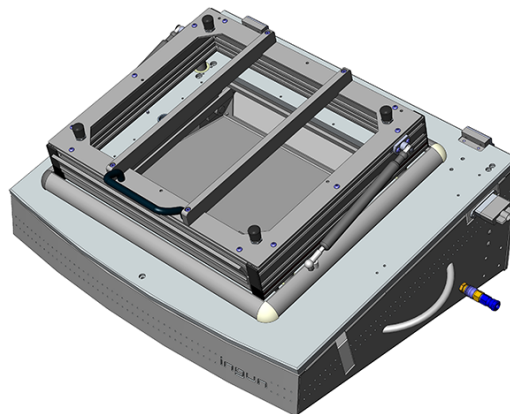


GO TO PRODUCT

ingun[®]

Partner for Future Technology

- Pneumatic test fixture with parallel closing drive for testing medium PCB quantities
- Robust, durable test fixture with cam disc
- Standard and ESD exchangeable kits that can be exchanged quickly and without tools
- Increased ease of use without significant closing forces
- Rapid contacting movement



General data

| | |
|----------------------------------|------------------------------|
| Test system interface: | Not pre-wired |
| Product group: | Pneumatic test fixtures (PA) |
| Main series: | PA xxxx |
| Subseries: | PA 21xx |
| Series: | PA 2130 |
| Size: | xx30 |
| Test fixture type: | Exchangeable test fixture |
| Contact stroke generation: | Pneumatic |
| Housing type: | Desk housing |
| Max. interface signals: | 0 |
| Interface blocks required: | No |
| Max. internal interface blocks: | 0 |
| Contacting direction: | Double-sided (top/bottom) |
| Max. contact force: | 700 N [2,517 ozf] |
| Approx. parallel contact stroke: | 15 mm [.59 in] |
| Weight: | 18.8 kg [41.4 lbs] |
| Min. temperature: | 10 °C [50 °F] |
| Max. temperature: | 60 °C [140 °F] |
| Low voltage: | No |
| ESD-compliant: | No |
| RoHS-compliant: | No |

Technical data

| | |
|---|--|
| Pushrod length: | 51 mm [2 in] |
| Test probe installation height, top: | 16 mm [.629 in] |
| Test probe installation height, bottom: | 10.5 mm [.413 in] |
| Free space above PCB: | 49 mm [1.92 in] |
| Permissible test voltage: | 25 VAC / 60 VDC |
| Pressure frame opening angle: | 60 ° |
| Compressed air supply: | 4 – 6 bar [58 – 87 psi] |
| Standard version: | Yes, with compatible exchangeable kit |
| Useable area, standard (WxD): | 250 x 200 mm [9.84 x 7.87 in] |
| ESD version: | Yes |
| Useable area, ESD (WxD): | 250 x 200 mm [9.84 x 7.87 in] |
| Radio frequency version: | No |
| Rigid pin version: | No |
| Dual-stage version: | No |
| Additional contacting unit (ZSK), top: | Yes, with suitable additional option |
| Outer dimensions, closed (WxDxH): | 648 x 469 x 273 mm [25.5 x 18.4 x 10.7 in] |

INGUN Prüfmittelbau GmbH

Max-Stromeyer-Straße 162
78467, Constance, Germany
Phone +49 7531 8105-0
Customer hotline +49 7531 8105-888
Fax +49 7531 8105-65
info@ingun.com



Prices and delivery times on request.
Technical changes reserved. 05/26_GB

Learn more about
Test fixture kits

