

Automatic opener/closer FB-OSA-P-ZSK/VKH/NDH

Item 115857



GO TO PRODUCT

ingun®

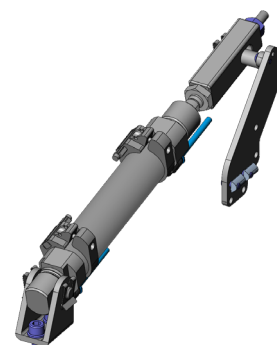
Partner for Future Technology

- Automatic opener/closer to automatise vacuum test fixtures
- Automated opening and closing of the additional contacting units, vacuum cover, or pressure frame mounted on VA top units.
- Functional unit for individually configurable upgrading (independent, on-site installation)
- Pneumatic drive system

NEW

Application

Using the automatic opener/closer, vacuum test fixtures can be upgraded with a pneumatic drive, which enables the automated opening and closing of the additional contacting units, vacuum cover, or pressure frame mounted on VA top units. The drive is provided by a pneumatic cylinder that drives the vacuum test fixture assembly reliably via a mounting plate.



Note:

Upgrading the vacuum test fixture with the automatic opener/closer results in potential risks for the operator, which must be eliminated by users on site using suitable protective equipment to ensure safe operation.

Typically maximum opening angle

- Opening angle of additional contacting unit: 84°
- Opening angle of vacuum cover: 72°
- Opening angle of pressure frame: 78°

Optional components

- Pneumatic control system to reliably control the automatic opener/closer
- Pneumatic unlocking unit for reliable opening of the closed pressure frame

Delivery

The product, which does not include the control system, must be assembled upon delivery using detailed documentation provided.

General data

Product group:	Automation
Series:	FB-VAxxxx
Type:	VA automatic opener/closer
Version:	Pneumatic
Accessory type:	Additional function
Scope of delivery:	Unassembled
Width:	50 mm [1.96 in]
Height:	102 mm [4.01 in]
Weight:	0.3 kg [.661 lbs]
Min. temperature:	10 °C [50 °F]
Max. temperature:	60 °C [140 °F]
RoHS-compliant:	Yes

Note:

To install the automatic opener/closer, refer to the drawing, which includes all necessary information. The gas springs provided and their mounting parts must be removed before installation.

Note:

For loads of > 7 kg, we recommend mounting the functional unit on both sides.

Note:

Customers are fully responsible for the professional installation of the functional unit. INGUN cannot accept any liability for damage resulting from incorrect installation, failure to observe the instructions in the documentation provided or failure to operate the test fixture or in a suitable test environment.

Compatible with

Vacuum test fixtures (VA):	VA 20xx
Accessories:	ZSK

Technical data

Stroke:	80 mm [3.14 in]
Connection:	Compressed air, 6 bar
Force:	295 N [1,061 ozf]
Compressed air connection:	QS-4
Length:	308 mm [12.1 in]
Outer dimensionS (WxDxH):	50 x 308 x 102 mm [1.96 x 12.1 x 4.01 in]

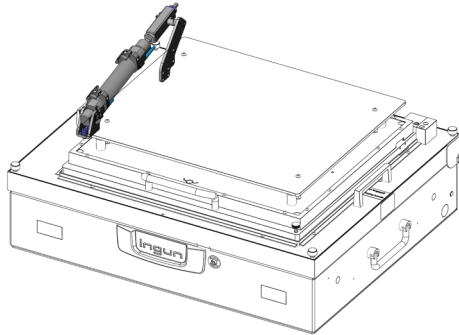
Automatic opener/closer FB-OSA-P-ZSK/VKH/NDH

Item 115857



ingun[®]

Partner for Future Technology



Accessories

Part no.	Designation	Version
115870	FB-STP-OSA-ZSK/VKH/NDH	Pneumatic control for automatic opener/closer unit for vacuum test fixtures
116285	FB-ENT-NDH-P	Pressure frame unlocking unit, pneumatic

INGUN Prüfmittelbau GmbH

Max-Stromeyer-Straße 162
78467, Constance, Germany
Phone +49 7531 8105-0
Customer hotline +49 7531 8105-888
Fax +49 7531 8105-65
info@ingun.com



Prices and delivery times on request.
Technical changes reserved. 05/26_GB

Learn more about
Test fixture kits

