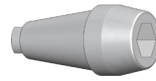


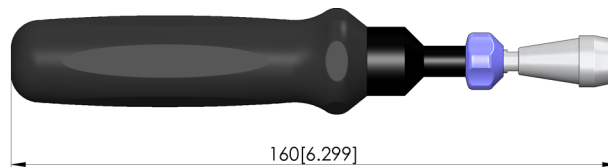
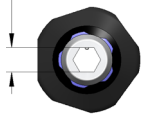


GO TO PRODUCT

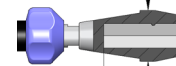
Drehmomentschlüssel Für BIT-Werkzeug



SW6.4[WAF.252]



∅ 13.5[.531]



19.5[.768]

General data

Screw-in torque max.:	40 cNm [3.54 lbf·in]
Product group:	Torque wrench (DW)
Series:	DW
Tool for receptacle (KS):	No
Tool for test probe (GKS):	Yes
Test probe installation type:	Screw-in
Tool version:	Adjustable
Screw-in torque:	5 – 40 cNm [.442 – 3.54 lbf·in]
RoHS-compliant:	Yes

INGUN Prüfmittelbau GmbH

Max-Stromeyer-Straße 162
78467, Constance, Germany
Phone +49 7531 8105-0
Customer hotline +49 7531 8105-888
Fax +49 7531 8105-65
info@ingun.com



Learn more about
Tool

