

# Receptacle KS-746 23 M

Item KS-74623M



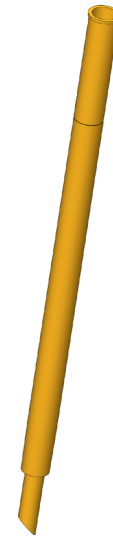
GO TO PRODUCT

ingun®

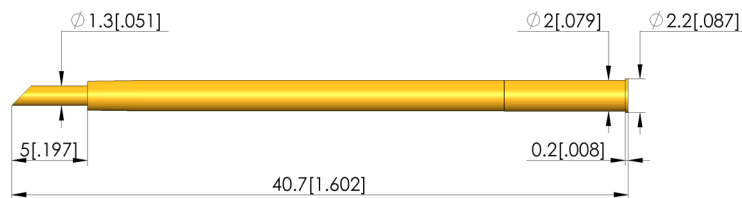
Partner for Future Technology

## Kontaktsteckhülsen

Mit Gewinde zum Einpressen in das Trägermaterial



1:1



### General data

Product group:  
Series:  
Sub-series:  
Type of receptacle connection:  
Press ring:  
Surface area:  
Collar diameter:  
Collar height:  
Knurl:  
Vacuum-tight:  
RoHS-compliant:

Receptacles (KS)  
KS-746  
KS-746 M screw-in version  
Solder / open  
No  
Gold  
2.2 mm [.086 in]  
0.2 mm [.007 in]  
No  
yes (< 1 ccm / min)  
Yes

### Mechanical data

Total length: 40.7 mm [1.6 in]  
Outer diameter: 2 mm [.078 in]

### Mounting hole

Mounting hole in CEM1: 1.99 mm [.078 in]  
Mounting hole in FR4: 1.99 mm [.078 in]  
Mounting hole with press ring in CEM1: No  
Mounting hole with press ring in FR4: No

### INGUN Prüfmittelbau GmbH

Max-Stromeyer-Straße 162  
78467, Constance, Germany  
Phone +49 7531 8105-0  
Customer hotline +49 7531 8105-888  
Fax +49 7531 8105-65  
info@ingun.com



Prices and delivery times on request.  
Technical changes reserved. 06/26\_GB

Learn more about  
Test probes

