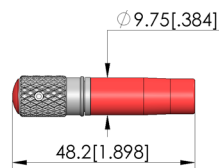
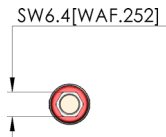
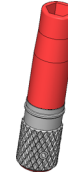
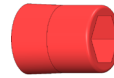




GO TO PRODUCT

## Drehmomentschlüssel Für BIT-Werkzeug



### General data

Screw-in torque max.:	5 cNm [.442 lbf-in]
Product group:	Torque wrench (DW)
Series:	DW
Tool for receptacle (KS):	No
Tool for test probe (GKS):	Yes
Test probe installation type:	Screw-in
Tool version:	Pre-set
Screw-in torque:	5 cNm [.442 lbf-in]
RoHS-compliant:	Yes

### INGUN Prüfmittelbau GmbH

Max-Stromeyer-Straße 162  
78467, Constance, Germany  
Phone +49 7531 8105-0  
Customer hotline +49 7531 8105-888  
Fax +49 7531 8105-65  
info@ingun.com



Learn more about  
Tool

