

Adapter sleeve board marker

ADH-ME-M8-R

Item 109138



GO TO PRODUCT

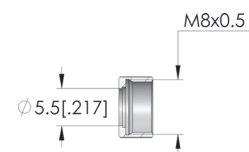
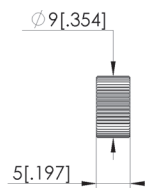
ingun[®]

Partner for Future Technology

- To secure the engraving unit in the receptacle when the board marker probe is installed upside down.
- Tightening torque: 2-4 Nm

Application

The adapter sleeve is used to secure the board marker probe ME-E-R2,0-08-053-2S-BL6V-42V in position when installed overhead.



General data

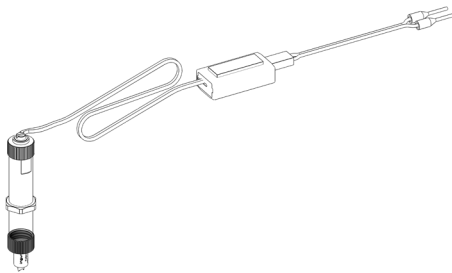
Product group:	Mechanical accessory
Series:	ADH
Type:	Adapter sleeve
Version:	Screw-on nut with stop
Accessory type:	Customising accessories
Material:	1.2210
Height:	5 mm [.196 in]
Weight:	0.02 kg [.044 lbs]
Min. temperature:	10 °C [50 °F]
Max. temperature:	60 °C [140 °F]
RoHS-compliant:	Yes

Compatible with

Board marker probe (ME): ME-E-R2,0-08-053-2S-BL6V-42V

Technical data

Installation:	Thread M8x0.5
Diameter:	9 mm [.354 in]
Inner diameter:	M8x0,5 mm



Accessories (Board marker)

Part no.	Designation	Version
107376	ME-E-R2,0-08-053-2S-BL6V-42V	Electric board marker (8 x 53 mm (DxL))

INGUN Prüfmittelbau GmbH

Max-Stromeyer-Straße 162
78467, Constance, Germany
Phone +49 7531 8105-0
Customer hotline +49 7531 8105-888
Fax +49 7531 8105-65
info@ingun.com



Prices and delivery times on request.
Technical changes reserved. 06/26_GB