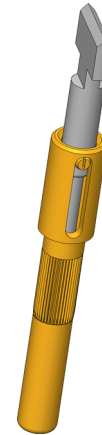
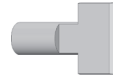


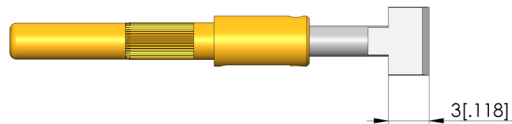
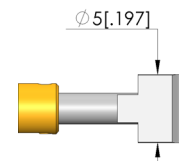
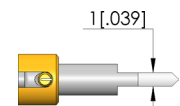
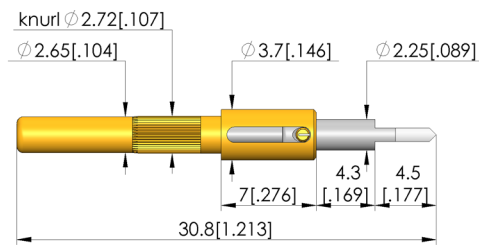


Durchgangsprüfung

Zur Überprüfung von möglichen offenen Verbindungen, Kurzschlüssen und Fehlverdrahtungen



1:1



Test Probe

GKS-714 220 510 R 3007

Item GKS-714-0006



GO TO PRODUCT

ingun®

Partner for Future Technology

General data

Product group:	xxx
Sub-product group:	Non-rotating test probes
Series:	GKS-714
Grid:	5.08 mm [200 mil]
Contacting from:	Female connector
Magnetic:	Yes
Installation type:	Plug-in
Quick-exchange system:	Yes
Adjustable installation height:	No
Non-rotating:	Yes
Compatible receptacle(s):	KS-714
Min. temperature:	-40 °C [-40 °F]
Max. temperature:	80 °C [176 °F]
RoHS-compliant:	Yes

Tip style data

Tip style:	20 spade, flat, bevelled, self-cleaning
Tip diameter:	5 mm [.196 in]
Tip style surface:	R rhodium
Tip style material:	2 steel
Spade width:	1 mm [.039 in]
Spade length:	4.5 mm [.177 in]

Electrical data

Current load capacity / rated current:	8 A
Typical resistance (RI):	30 mOhm

Mechanical data

Total length:	30.8 mm [1.21 in]
Barrel diameter:	2.65 mm [.104 in]
Maximum stroke:	5 mm [.196 in]
Spring pre-load:	1 N [3.59 ozf]
Collar height:	07
Spring force at working stroke:	3 N [10.7 ozf]
Recommended working stroke:	4 mm [.157 in]

INGUN Prüfmittelbau GmbH

Max-Stromeyer-Straße 162
78467, Constance, Germany
Phone +49 7531 8105-0
Customer hotline +49 7531 8105-888
Fax +49 7531 8105-65
info@ingun.com

