

# Detection - locked

## FB-ABF-V-SKS-MAxxxx

Item 43246

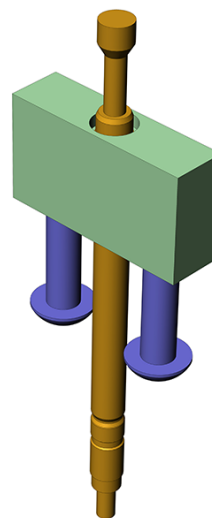


GO TO PRODUCT

# ingun®

Partner for Future Technology

- Upgrade kits to make operation easier, increase the testing reliability, and to reduce handling times
- Available for manual test fixtures and exchangeable kits
- Wide range of varying functions



### General data

Product group:  
Series:  
Type:  
Version:  
Accessory type:  
Width:  
Height:  
RoHS-compliant:

Detection units  
FB-MAxxxx  
Switching probe  
Locked moving plate (ATS)  
Additional function  
8 mm [.314 in]  
20 mm [.787 in]  
Yes

### Compatible with

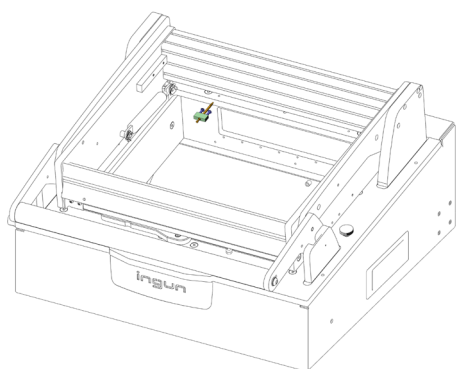
Exchangeable kits version:  
For dual-stage contacting:

No limitations  
Yes

### Technical data

Current rating:  
Installation:  
Length:  
Outer dimensionS (WxDxH):

5 A  
Thread M3  
18 mm [.708 in]  
8 x 18 x 20 mm [.314 x .708 x .787 in]



### INGUN Prüfmittelbau GmbH

Max-Stromeyer-Straße 162  
78467, Constance, Germany  
Phone +49 7531 8105-0  
Customer hotline +49 7531 8105-888  
Fax +49 7531 8105-65  
info@ingun.com



Prices and delivery times on request.  
Technical changes reserved. 05/26\_GB

Learn more about  
MA functional units



FUNCTIONAL UNIT

ingun.com