

Electric proximity switch

ENS-M-T08-S-12-30V-K2,5

Item 25638



GO TO PRODUCT

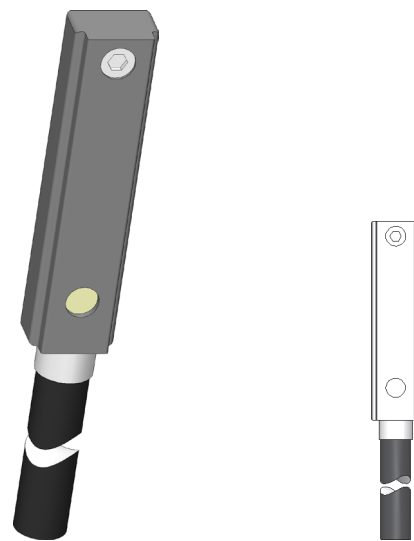
ingun[®]

Partner for Future Technology

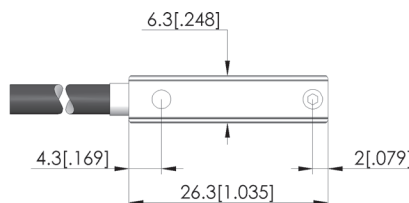
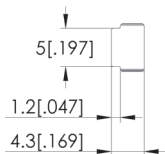
- Berührungslos wirkend
- Präziser Schalterpunkt
- Robust gegen Staub, Feuchtigkeit und Erschütterungen
- Schaltabstand: 3 mm

Application

Näherungsschalter werden zur Erkennung von Positionen eingesetzt, um Prozesse zu steuern oder Zustände zu überwachen. Sie wirken berührungslos.



1:1



General data

Product group:	Electric accessory
Series:	ENS
Type:	Proximity switch, magnetic
Version:	Closer
Accessory type:	Customising accessories
Width:	6.3 mm [.248 in]
Height:	4.3 mm [.169 in]
Weight:	0.01 kg [.022 lbs]
Min. temperature:	-40 °C [-40 °F]
Max. temperature:	60 °C [140 °F]
RoHS-compliant:	Yes

Compatible with

Accessories: SAM-P-50-068N-082-105

Technical data

Connection:	Cable
Max. current:	0.5 A
Installation:	Clamped in T-slot
Max. voltage:	30 VDC
Length:	26.3 mm [1.03 in]
Cable length:	2500 mm [98.4 in]
Outer dimensionS (WxDxH):	6.3 x 26.3 x 4.3 mm [.248 x 1.03 x .169 in]

Electric proximity switch

ENS-M-T08-S-12-30V-K2,5

Item 25638



ingun[®]

Partner for Future Technology



INGUN Prüfmittelbau GmbH

Max-Stromeyer-Straße 162
78467, Constance, Germany
Phone +49 7531 8105-0
Customer hotline +49 7531 8105-888
Fax +49 7531 8105-65
info@ingun.com



Prices and delivery times on request.
Technical changes reserved. 06/26_GB